

# INFORMATION GUIDE FOR INTERNATIONAL STUDENTS AND STAFF 2014-2015



## **Information Guide for International Students and Staff**

This is the Information Guide of Politehnica University of Timisoara. It contains all kinds of information for international students, staff and guests who spend time at our university. Here you will find practical information useful for any visitor, as well as a list of exchange courses. Although all the information in the guide has been checked carefully, it may be subject to change. Should you have any questions or concerns, please do not hesitate to contact us.

Politehnica University of Timișoara

Department for International Relations

Address: Piața Victoriei nr. 2, Timișoara 300006 jud. Timiș, ROMANIA

Phone: +40-256-403034, +40-256-403033

Fax: +40-256-403174

Website: <http://www.upt.ro/international>

### **Department for International Relations team:**

Prof. Dr. eng. Lia DOLGA, Head of Department and Erasmus+ Institutional Coordinator

E-mail: [lia.dolga@upt.ro](mailto:lia.dolga@upt.ro)

Asst. Dr. eng. Hannelore FILIPESCU, Outgoing Erasmus+ teaching and administrative staff

E-mail: [hannelore.filipescu@upt.ro](mailto:hannelore.filipescu@upt.ro)

Mrs. Adriana IACOB, Outgoing non-Erasmus+ students

E-mail: [adriana.iacob@upt.ro](mailto:adriana.iacob@upt.ro)

Mrs. Loredana NENEȘTEANU, Incoming Erasmus+ students and staff, full-degree non-EU students

E-mail: [loredana.nenesteanu@upt.ro](mailto:loredana.nenesteanu@upt.ro)

Mrs. Andreea PERESCU, Outgoing Erasmus+ students

(replacing Mrs. Roxana TRIPȘA who is on leave of absence in the academic year 2014-2015)

E-mails: [andreea.perescu@upt.ro](mailto:andreea.perescu@upt.ro), [roxana.tripsa@upt.ro](mailto:roxana.tripsa@upt.ro)

Mrs. Andreea ROTARU, Outgoing Erasmus+ placements for recent graduates

E-mail: [andreea.rotaru@upt.ro](mailto:andreea.rotaru@upt.ro)

# TABLE OF CONTENTS

## CHAPTER 1 – LIVING IN ROMANIA

1.1. Discover Romania .....	5
1.2. Getting here and around.....	8
1.3. Money.....	9
1.4. Timișoara .....	10
1.5. The Romanian language .....	12

## CHAPTER 2 – POLITEHNICA UNIVERSITY OF TIMIȘOARA

2.1. Brief history.....	14
2.2. Internationalisation .....	14
2.3. Academic calendar .....	18
2.4. Academic offer in international languages:	
2.4.1. Faculty of Architecture and Urban Planning .....	19
2.4.2. Faculty of Automation and Computer Science .....	19
2.4.3. Faculty of Civil Engineering .....	23
2.4.4. Faculty of Communication Sciences .....	26
2.4.5. Faculty of Electrical and Power Engineering .....	27
2.4.6. Faculty of Electronics and Telecommunications .....	27
2.4.7. Faculty of Engineering in Hunedoara .....	30
2.4.8. Faculty of Industrial Chemistry and Environmental Engineering .....	30
2.4.9. Faculty of Management in Production and Transportation .....	31
2.4.10. Faculty of Mechanical Engineering.....	31

## CHAPTER 3 – PRACTICAL INFORMATION FOR INTERNATIONAL EXCHANGE STUDENTS

3.1. Admission procedures .....	35
3.2. Visa, residence permit, registration, health insurance .....	36
3.3. Accommodation, catering and cost of living .....	36
3.4. Sports, academic and social life.....	38

## CHAPTER 4 – PRACTICAL INFORMATION FOR INTERNATIONAL STAFF

4.1. Incoming Erasmus+ staff mobility for teaching (STA) .....	41
4.2. Incoming Erasmus+ teaching and administrative staff mobility for training (STT) .....	42
4.3. List of Erasmus+ partner universities in 2014-2015 .....	42



# CHAPTER 1. LIVING IN ROMANIA

## 1.1. DISCOVER ROMANIA



National name: România (pronounced romî'ni.a)

Neighbouring countries: Serbia, Hungary, Ukraine, Republic of Moldova, Bulgaria

Capital and largest city: Bucharest– 1.9 million inhabitants

Major cities: Iași, Cluj-Napoca, Timișoara, Constanța, Craiova

Area: 238,391 km<sup>2</sup>

Highest mountains: Moldoveanu (2544 m), Negoiu (2534 m)

Major rivers: Danube (1075 km), Mureș (761 km), Prut (742 km)



Largest lake: Razelm-Sinoe (731 km<sup>2</sup>)

Sea shore: Black Sea (245 km)

Population: 20.2 million

Official language: Romanian

Political system: Semi-presidential republic



Administrative system: 41 counties (județe) + Bucharest

Member of NATO since 2004

Member of the European Union since 2007

Currency: Romanian leu (RON)

Time zone: EET (GMT+2)

Romania National Tourist Office: [www.romaniatourism.com](http://www.romaniatourism.com)



UNESCO included on the World Heritage List seven areas in Romania:

1. **The Danube Delta** - The waters of the Danube, which flow into the Black Sea, form the largest and best preserved of Europe's deltas. The Danube Delta hosts over 300 species of birds as well as 45 freshwater fish species in its numerous lakes and marshes.



2. **The churches of Moldavia** - The eight churches of northern Moldavia (Arbore, Humor, Moldovița, Pătrăuți, Probota, Suceava, Gura Humorului, Sucevița), built from the late 15th century to the late 16th century, their external walls covered in fresco paintings, are masterpieces inspired by Byzantine art. They are authentic and particularly well preserved. Far from being mere wall decorations, the paintings form a systematic covering on all the facades and represent complete cycles of religious themes. Their exceptional composition, the elegance of the characters, and the harmony of the colors blend perfectly with the surrounding countryside.

3. **The Dacian fortresses of the Orăștie Mountains** - Built in the 1st centuries B.C. and A.D. under Dacian rule, these fortresses show an unusual fusion of military and religious architectural techniques and concepts from the classical world and the late European Iron Age. The six defensive works, the nucleus of the Dacian Kingdom, were conquered by the Romans at the beginning of the 2nd century A.D.; their extensive and well-preserved remains stand in spectacular natural surroundings and give a dramatic picture of a vigorous and innovative civilization.

4. **The historic centre of Sighișoara** - Founded by German craftsmen and merchants known as the Saxons of Transylvania, Sighișoara is a fine example of a small, fortified medieval town which played an important strategic and commercial role on the fringes of central Europe for several centuries.



5. **The Horezu Monastery** - Founded in 1690 by Prince Constantine Brancoveanu, the monastery of Horezu, is a masterpiece of the 'Brancovan' style. It is known for its architectural purity and balance, the richness of its sculptural detail, the treatment of its religious compositions, its votive portraits and its painted decorative works. The school of mural and icon painting established at the monastery in the 18th century was famous throughout the Balkan region.

6. **The villages with fortified churches in Transylvania** - These Transylvanian villages with their fortified churches provide a vivid picture of the cultural landscape of southern Transylvania. The seven villages inscribed (Biertan, Călnic, Dârjiu, Prejmer, Saschiz, Valea Viilor, Viscri), founded by the Transylvanian Saxons are dominated by their fortified churches, which illustrate building styles from the 13th to the 16th century.

7. **The Wooden Churches of Maramureș** - These eight churches (Bârsana, Budești, Desești, Ieud, Plopiș/Șisești, Poienile Izei, Rogoz/Târgu Lăpuș, Șurdești/Șisești) are outstanding examples of a range of architectural solutions from different periods and areas. They show the variety of designs and craftsmanship adopted in these narrow, high, timber constructions with their characteristic tall, slim clock towers at the western end of the building, either single- or double-roofed and covered by shingles. As such, they are a particular vernacular expression of the cultural landscape of this mountainous area of northern Romania.



The most common weekend trip destinations for incoming Erasmus students are:

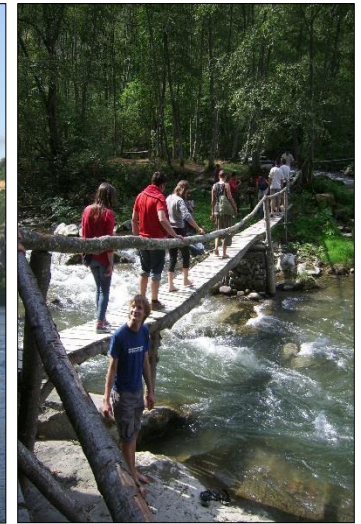
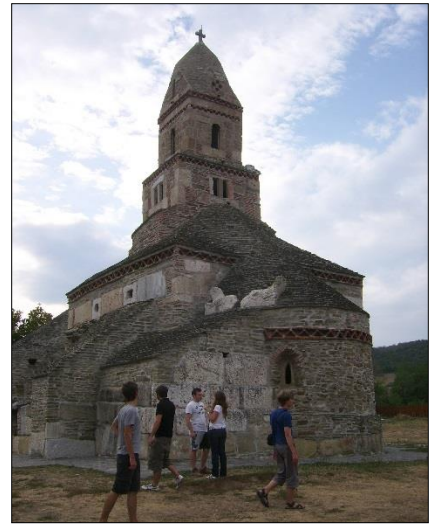
**1. The cities of Banat and Transylvania.** Arad, Alba-Iulia, Deva, Hunedoara, Reșița, Târgu Jiu, Sibiu, Cluj-Napoca or Oradea are all easily accessible by train or bus.

**2. Iron Gates National Park and the Danube river gorges.** Whether driving close to the Danube and stopping in the picturesque villages or boarding a ship for a two to four hours tour on the Danube, this is a great way of spending a sunny week-end.

**3. During winter:** the closest winter sports resorts are Semenic or Muntele Mic, both accessible as day trips from Timișoara. For longer trips, Poiana Brașov, Sinaia, Predeal, Păltiniș or Runcu are great choices.

**4. International:** Belgrade and Novi Sad in Serbia ; Budapest and Szeged in Hungary; 14 country capitals are within a 700 km range from Timisoara. Various places around Europe are also accessible by low-cost airlines.





## 1.2. GETTING HERE AND AROUND

**By air:** Timișoara's "Traian Vuia" International Airport ([www.aerotim.ro](http://www.aerotim.ro)) connects the city to many major cities in Europe. There are also domestic connections to all major airports in Romania. The airlines that operate flights from this airport include Austrian Airlines, Carpatair, Lufthansa, Tarom and Wizzair. The connection from Timișoara to the airport is made by buses Expres 4 and 4B. A bus ticket is 6 Lei = 1.5 Euro. The airports of Bucharest (transfer by air or train to Timișoara) or Budapest (transfer by train or minibus to Timișoara) might offer lower priced alternatives for guests coming from certain destinations.

**By train:** Romania has an extensive railway network, with trains being often the cheapest, though sometimes the slowest means of reaching remote places. We recommend using Inter Regio trains for the best travel conditions. Trains are a good travel option for reaching Budapest (Hungary), Belgrade (Serbia) or Vienna (via Arad). Discounts are available for students and groups of travellers.

**By car:** Don't forget to buy a "rovigneta" when entering the country (toll for using national roads valid 1 day, 7 days, 30 days, 90 days or 12 months) if you decide to bring your own car. In the student complex there are limited on-street (not guarded) parking places.

**By taxi:** Guests arriving at the airport at odd hours might need to take a taxi to reach the city. Updated phone numbers of various companies and details about normal fares can be obtained from the Department of International Relations.

**Public transportation:** It is unlikely for international students to use the public transportation system of Timișoara: the student complex is situated within walking distance from the city center. A regular one-way bus/tram ticket is 2 RON (~0.45 EUR), while an express ticket is 2.5 RON (~0.55 EUR). International students will have access to discounts after registration.



### 1.3. MONEY

The national currency in Romania is called “leu” (plural “lei”).

In circulation are currently the following coins:

- 1 ban (100 bani = 1 leu)
- 5 bani
- 10 bani
- 50 bani



and the following bank notes:

- 1 leu
- 5 lei
- 10 lei
- 50 lei
- 100 lei
- 200 lei
- 500 lei.



Please note that the 200 lei and 500 lei bank notes are less common and might be refused in smaller shops if they cannot give you proper change.

The exchange rate varies between 4.4 – 4.5 lei for 1 EUR.

We recommend that you buy in your home country a small amount of lei (enough to pay the taxi or bus fares, and cover the first expenses) in order to avoid exchanging money at the airport, where the exchange rate is less favorable.



The use of debit and credit cards is becoming more common in Romania, though they are still not as widely used as in some other countries. All major cards are accepted at hypermarkets, supermarkets, shopping centers, hotels, larger urban restaurants. ATMs are widely available in cities, and more rare in remote areas or villages.



## 1.4. TIMIȘOARA



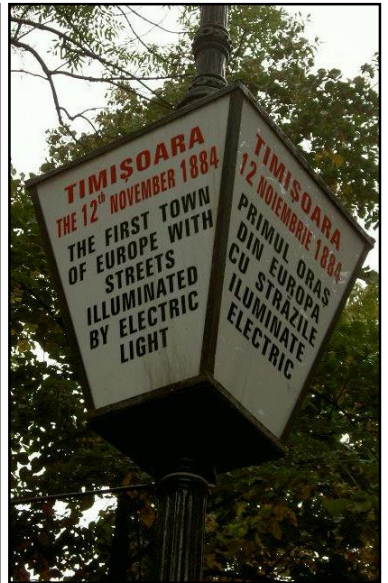
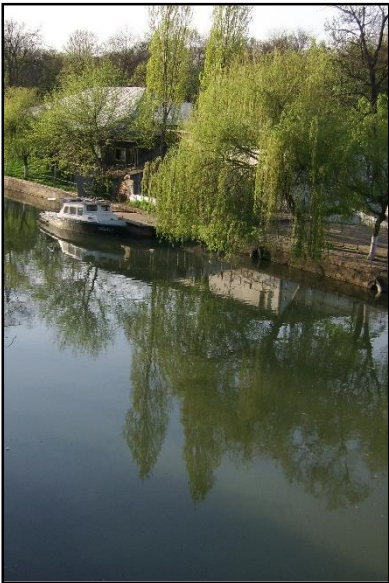
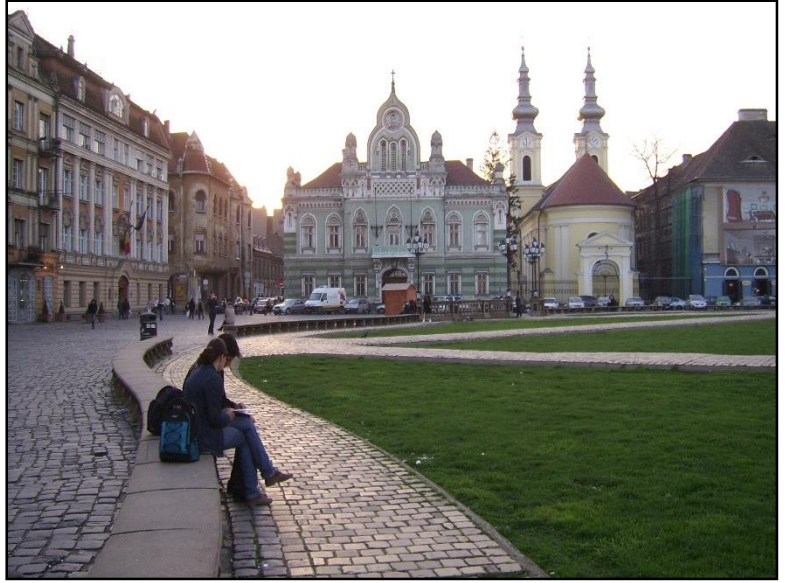
Timișoara was born in the Middle Ages, as a small settlement needed for defense in the middle of the swamps. The city developed rapidly, and came to play a key role in Romanian and European history. In 1552 the city was conquered by the Ottomans and becomes the center of a large pașalâc. In 1716 the city is freed from the Ottomans by the Prince Eugene of Savoy and becomes a part of the Hasburg Empire. Over the next two centuries the city is heavily influenced by Vienna. Thousands of colonists from all over Europe come into the region of Banat, the swamps are drained and the Bega river is turned in a canal to link Timișoara to Vienna by ship. The economy is booming, the city reaches an continental importance, many of the city's technical premiers dating from this period, including the introduction of electrical street lighting and of the electrical –drawn trams. At the end of 1918, the citizens of Banat region decide to unite with Romania.

Situated less than 700 km away from 14 European capitals (Belgrade, Bratislava, Bucharest, Budapest, Ljubljana, Podgorica, Pristina, Prague, Sarajevo, Skopje, Sofia, Tirana, Vienna, Zagreb) in an ethno-culturally diverse region and being a thriving university centre generated a

dynamic lifestyle and an open-minded community with a busy cultural agenda including dozens of festivals of all kinds:

- Bega Boulevard Festival (open-air, whole-family festival)
  - Hearts Festival (traditional music & dancing from around the world)
  - PLAI Festival (world music)
  - Musical Timisoara International Festival (classical music)
  - Jazz TM (jazz music)
  - House Parade Festival (electronic music)
  - Early Music Festival, Baroque Music Festival
  - Opera and Operetta Festival (open-air shows during the summer)
  - EuroThalia Festival (theatre in various European languages)
  - European Film Festival
  - TimiShort Film Festival (short movies festival)
  - CineCultura Festival (movie festival)
  - French Film Festival
  - Spanish Culture Days
  - Timișoara International Dance Festival (ballroom dancing)
  - Salsa Addicted Festival
  - Street Art International Festival
  - Graffiti International Festival
  - StudentFest (student arts festival)
  - Wine Festival
  - Beer Festival
- and many many more.





## 1.5. THE ROMANIAN LANGUAGE

The Romanian alphabet has 31 letters, similar to the ones in the English alphabet, with the exception of five special letters called 'diacritics': ă (like the 'a' in English word 'musical'), ș (pronounced as 'sh'), ț (pronounced 'ts'), â, î (have the same reading, without an English equivalent).

Certain letters (and letter combinations) are pronounced differently than they are in English:

- ă as in father
- î, â No English equivalent
- e as in tell
- i [e] as in pick
- j as in leisure
- ș as in shoe
- ț [ts] as in fits
- ce as in check
- gi [dʒi] as in gin
- ge [dʒe] as in gender
- chi [ki] as in skill
- che [ke] as in chemistry
- ghi [gi] as in give
- ghe [ge] as in guess

### BASIC VOCABULARY

#### Personal data – Date personale

Surname – Nume

First name – Prenume

Date of birth – Data nașterii

Country – Țară

Address – Adresă

Street – Stradă

Number – Număr

Passport – Pașaport

#### Greetings – Formule de salut

Good morning – Bună dimineața!

Good afternoon – Bună ziua!

Good evening – Bună seara!

Good night – Noapte bună!

Goodbye – La revedere!

Hi! – Bună / Salut / Ceau (all informal)

Bye – Ceau / Pa

See you soon – Pe curând!

## Conversation – Conversație

My name is... – Numele meu este...

What is your name? – Cum vă numiți? (formal)

Cum te cheamă? (informal)

How are you? – Ce mai faceți? (formal)

Ce mai faci? (informal)

I'm fine, thanks! – Bine, mulțumesc!

Please – Vă rog (formal) / Te rog (informal)

Thank you – Mulțumesc (formal) / Mersi (informal)

You're welcome – Cu plăcere!

Excuse me, I'm sorry – Scuze! /Îmi pare rău!

Enjoy your meal – Poftă bună!

Cheers! – Noroc!

Do you speak English? – Vorbiți englezește?

Yes, a little – Da, puțin

Yes – Da

No – Nu

Maybe – Poate

I don't understand – Nu înțeleg

I don't know – Nu știu

How much does it cost? – Cât costă?

Price – Preț

Where is... – Unde este...

Is it far? – E departe?

I am lost – M-am pierdut

Can you show me on the map? – Îmi arătați pe hartă?

Here – Aici

There – Acolo

Towards – Spre

Could you call me a taxi? – Ați putea să îmi chemați un taxi?

I am happy/sad/excited – Sunt fericit/trist/încântat

I am ill/worried/well – Sunt bolnav/îngrijorat/bine

## Signs - Semne

Open / Closed – Deschis / Închis

Men / Women – Bărbați / Femei

Entrance / Exit – Intrare / ieșire

No smoking – Fumatul interzis

Theatre - Teatru

Cinema - Cinema

Airport - Aeroport

Train station - Gară

Arrivals / Departure – Sosiri / Plecări

Police - Poliție

Post Office - Poștă

Exchange office – Casă de schimb valutar

Hospital - Spital

Fire department - Pompieri

University - Universitate

Church - Biserică

Emergency exit – Ieșire de urgență

Watch out! – Atenție!

Right - Dreapta

Left - Stânga

Straight forward – Drept înainte

Back – Înapoi

## To be – A fi

I am – Eu sunt

You are – Tu ești

He/she is – El/ea este

We are – Noi suntem

You are – Voi sunteți

They are - Ei/ele sunt

# CHAPTER 2. POLITEHNICA UNIVERSITY OF TIMIȘOARA

## 2.1. BRIEF HISTORY

Politehnica University of Timisoara (UPT) is one of the biggest technical universities from Central and Eastern Europe. It was founded in 1920 as an answer to the need for engineers of the Romanian society in the context of the post WW1 economical recovery. During its 90 years of existence, Politehnica University of Timisoara produced over 100 000 engineers, greatly appreciated on the national and international level for their competence.

The study programmes are organized according to the Bologna paradigm. Over 13500 students are registered on various levels (Bachelor, Master, Doctoral and Postdoctoral), while 850 teaching staff and 900 administrative and auxiliary staff work within its framework. Politehnica University of Timisoara has 10 faculties : Faculty of Architecture and Urban Planning; Faculty of Automation and Computer Science; Faculty of Civil Engineering; Faculty of Communication Sciences; Faculty of Electrical and Power Engineering; Faculty of Electronics and Telecommunications; Faculty of Industrial Chemistry and Environmental Engineering; Faculty of Management in Production and Transportation; Faculty of Mechanical Engineering; Faculty of Engineering in Hunedoara.

Politehnica University of Timisoara owns an educational and research infrastructure – buildings and equipments – comparable with the most prestigious European universities. Important investments were made during the last years. The students of Politehnica University of Timisoara have at their disposal a modern student campus, comprising two cafeterias and 16 student residences, totalizing 5 500 accommodation places. All 1 800 student rooms are furnished, have Internet connection and cable television.

## 2.2. INTERNATIONALISATION

Politehnica University of Timișoara encourages students to spend part of their studies or to do an internship abroad. The university has over 180 bilateral Erasmus+ agreements and more than 100 framework cooperation agreements with universities from all over Europe, but also from Asia, North and South America. Every year more than 200 students do a study or industrial placement abroad, while over 100 students from partner institutions come to study or do an industrial placement under the supervision of an UPT coordinator.

Furthermore, UPT encourages the international mobility of its staff members and welcomes visiting lecturers from partner universities and companies. Every year, through the LLP-Erasmus and CEEPUS programmes, more than 100 teaching and administrative UPT staff members do a teaching or training mobility abroad, while over 50 foreign lecturers come teach in Timișoara. Guest lecturers are always welcomed, as they enable students who do not go abroad to come into contact with different perspectives and teaching methods, while reinforcing the link between the institutions.

Increasing the number of both incoming and outgoing students and staff is one of the goals of the Department for International Relations. By sharing our experience with the partner higher education institutions, and by collaborating with colleagues from abroad, we can improve the strategies, policies and practices of internationalization.



Above: Politehnica University of Timișoara's Rectorate

Below (from top left, counterclockwise): UPT Library, Faculty of Automation and Computer Science, Faculty of Electronics and Telecommunications, Faculty of Electrical and Power Engineering, Faculty of Mechanical Engineering, Sports Center 1, Faculty of Civil Engineering, Faculty of Architecture and Urban Planning, Faculty of Communication Sciences





Faculty of Architecture and Urban Planning  
Faculty of Civil Engineering  
Faculty of Communication Sciences



Faculty of Mechanical Engineering



Faculty of Automation and Computer Science,  
Faculty of Electrical and Power Engineering  
Faculty of Electronics and Telecommunications



Faculty of Industrial Chemistry and Environmental  
Engineering



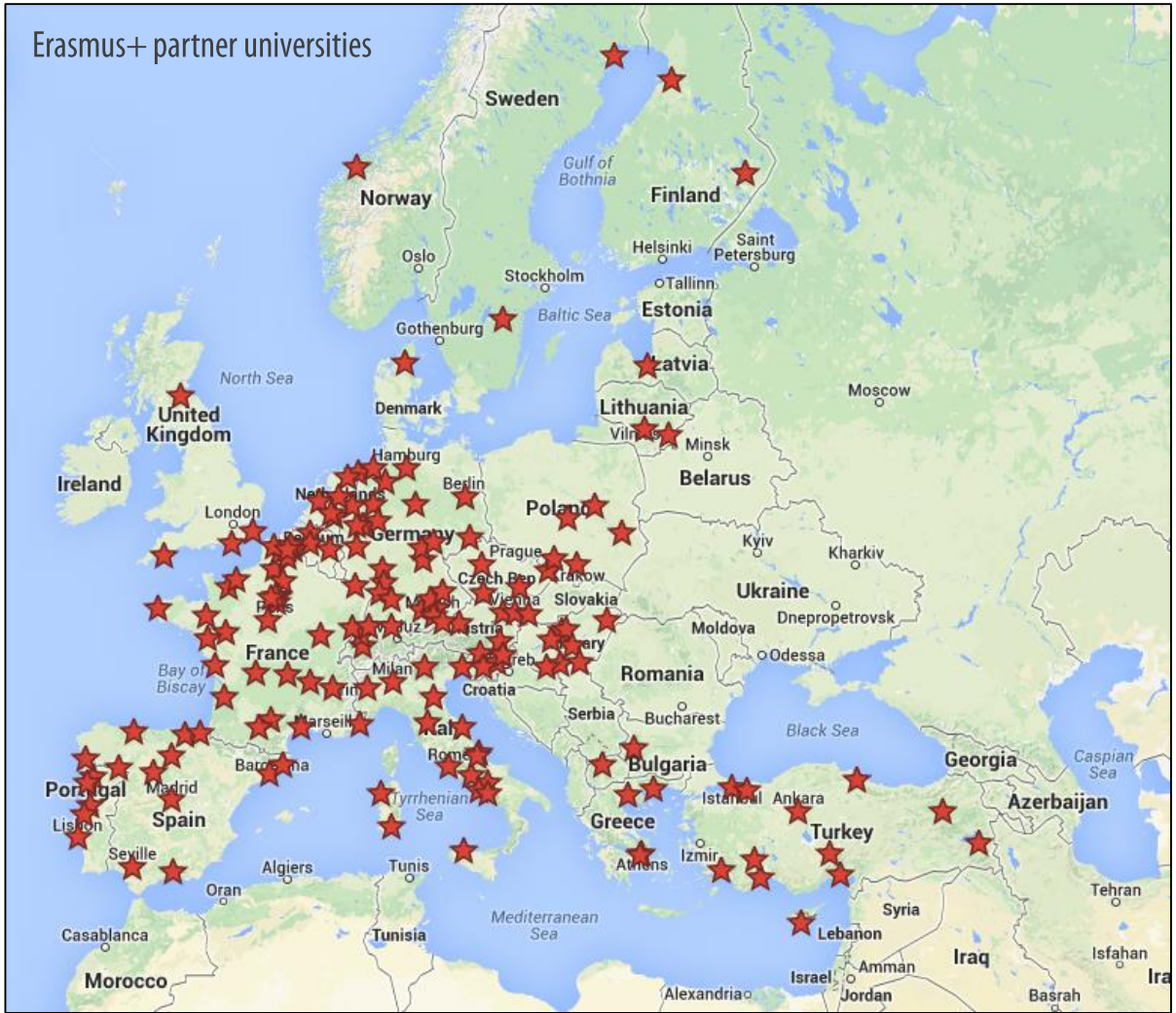
Faculty of Engineering in Hunedoara



Faculty of Management in Production and  
Transportation



# Erasmus+ partner universities



## 2.3. ACADEMIC CALENDAR

### **THE 1<sup>ST</sup> SEMESTER** of the academic year **2014/2015** for all years of study:

a) 22.09.2014 – 21.12.2014	TEACHING	(13 weeks)
b) 22.12.2014 – 04.01.2015	HOLIDAY	(2 weeks)
c) 05.01.2015 – 11.01.2015	TEACHING	(1 week)
d) 12.01.2015 – 01.02.2015	EXAM SESSION 1 (1 <sup>st</sup> presentation)	(3 weeks)
e) 02.02.2015 – 08.02.2015	HOLIDAY	(1 week)
f) 09.02.2015 – 22.02.2015 <sup>1</sup>	EXAM SESSION 2 (2 <sup>nd</sup> presentation)	(2 weeks)

### **THE 2<sup>ND</sup> SEMESTER** of the academic year **2014/2015**

**For students in the first three years of bachelor studies, fifth year Architecture students and first year master students:**

a) 16.02.2015 – 12.04.2015 <sup>1,2</sup>	TEACHING	(8 weeks)
b) 13.04.2015 – 19.04.2015	HOLIDAY	(1 week)
c) 20.04.2015 – 31.05.2015	TEACHING	(6 weeks)
d) 01.06.2015 – 21.06.2015	EXAM SESSION 3 (1 <sup>st</sup> presentation)	(3 weeks)
e) 22.06.2015 – 05.07.2015	EXAM SESSION 4 (2 <sup>nd</sup> presentation)	(2 weeks)

**For students in terminal years: fourth year bachelor students, third year students in Informatics, Public Administration and Communication**

a) 16.02.2015 – 05.04.2015 <sup>2</sup>	TEACHING	(7 weeks)
b) 06.04.2015 – 12.04.2015	ELABORATION OF BACHELOR THESIS	(1 week)
c) 13.04.2015 – 19.04.2015	HOLIDAY	(1 week)
d) 20.04.2015 – 03.05.2015 <sup>3</sup>	EXAM SESSION 3 (1 <sup>st</sup> presentation)	(2 weeks)
e) 04.05.2015 – 14.06.2015	ELABORATION OF BACHELOR THESIS	(6 weeks)
f) 15.06.2015 – 28.06.2015	DEFENSE OF BACHELOR THESIS	(2 weeks)

**For students in terminal years: sixth year students in Architecture, 2nd year master students**

a) 16.02.2015 – 12.04.2015	ELABORATION OF DIPLOMA THESIS	(8 weeks)
b) 13.04.2015 – 19.04.2015	HOLIDAY	(1 week)
c) 20.04.2015 – 31.05.2015	ELABORATION OF DIPLOMA THESIS	(6 weeks)
d) 01.06.2015 – 21.06.2015	PRESENTATION OF DIPLOMA THESIS	(3 weeks)

The re-examination session: 2 weeks, between 31.08.2015 – 13.09.2015.

## 2.4. ACADEMIC OFFER IN FOREIGN LANGUAGES

Politehnica University of Timișoara offers study programmes in Romanian, English, French and German. Please note that incoming exchange students can choose subjects normally taught in Romanian, as individual tutoring and examination in English, French or German can be arranged in most study fields. It might also be possible for an exchange student to prepare his/her bachelor, master or PhD thesis under the guidance of an UPT professor using a different language of communication (Hungarian, Russian, Italian, etc), though such requests have to be made well in advance and will be approved on a case-by-case basis. Optional subjects are taught only if a sufficient number of students choose that particular subject. This overview may be subject to change. For up-to-date information please check our website.

### 2.4.1. FACULTY OF ARCHITECTURE AND URBAN PLANNING

#### Architecture and Urban Planning (Bachelor+Master)

Subject	ECTS	Year of study	Semester	Language
Preparation of master's degree project in architecture and urban planning	10	6	Spring	EN,FR,DE

#### Furniture and Interior Design (Bachelor)

Subject	ECTS	Year of study	Semester	Language
Preparation of bachelor's degree project in furniture and interior design	10	3	Spring	EN,FR,DE

#### Urbanism and Territorial Planning (Master)

Subject	ECTS	Year of study	Semester	Language
Theory on the city	10	1	Fall	EN
Methods and techniques of urban research	10	1	Fall	EN
Urban legislation, politics and management	8	1	Spring	EN
The city and the territory I, II	8	2	Fall	EN
Preparation of master's degree project	15	2	Spring	EN,FR,DE

### 2.4.2. FACULTY OF AUTOMATION AND COMPUTER SCIENCE

#### Automation and Computer science

Subject	ECTS	Year of study	Semester	Language
Preparation of bachelor's degree project in computer science	5	4	Spring	EN,FR,DE
Preparation of bachelor's degree project in automation and applied informatics	5	4	Spring	EN,FR,DE
Preparation of bachelor's degree project in informatics	5	3	Spring	EN,FR,DE
Preparation of master's degree project in automated systems engineering	15	2	Spring	EN,FR,DE
Preparation of master's degree project in applied informatics systems in production and services	15	2	Spring	EN,FR,DE
Preparation of master's degree project in information systems in healthcare	15	2	Spring	EN,FR,DE

Preparation of master's degree project in information technology	15	2	Spring	EN,FR,DE
--	----	---	--------	----------

### Automotive Embedded Software (Master)

Subject	ECTS	Year of study	Semester	Language
Embedded systems I	8	1	Fall	EN
Software project management	8	1	Fall	EN
Software engineering I	8	1	Fall	EN
Data communications & applications to automotive	6	1	Fall	EN
Embedded systems II	8	1	Spring	EN
Communications skills	7	1	Spring	EN
Basic application know how	8	1	Spring	EN
Dynamic systems and stability in automotive control	7	1	Spring	EN
Optional: Fault detection and diagnosis	7	2	Fall	EN
Optional: Control of electrical drives	7	2	Fall	EN
Optional: Actuators in automotive systems	7	2	Fall	EN
Optional: Visual programming and modeling	7	2	Fall	EN
Optional: Advanced information security for embedded systems	8	2	Fall	EN
Optional: Advanced topics in control engineering and computer science: sensor networks	8	2	Fall	EN
Optional: Software engineering II	8	2	Fall	EN
Optional: Multi-agent systems	8	2	Fall	EN
Research activity	15	2	Spring	EN
Preparation and defending of dissertation thesis	15	2	Spring	EN

### Computer Engineering (Master)

Subject	ECTS	Year of study	Semester	Language
Optional: Testing of computer systems	9	1	Fall	EN
Optional: Image processing and recognition	9	1	Fall	EN
Optional: Data transmission, coding & compression	9	1	Fall	EN
Optional: Emerging systems	9	1	Fall	EN
Optional: High-end interfaces & equipments	9	1	Fall	EN
Optional: Advanced digital signal processing	9	1	Fall	EN
Research topics in computer systems	3	1	Fall	EN
Optional: Advanced embedded systems	9	1	Spring	EN
Optional: Integrated information systems	9	1	Spring	EN
Optional: Cellular data networks	9	1	Spring	EN
Optional: Optic fiber transmissions	9	1	Spring	EN
Optional: Automatic design & optimization of VLSI circuits	9	1	Spring	EN
Optional: Virtual measurement systems	9	1	Spring	EN
Introduction to research	3	1	Spring	EN
Optional: Robotic systems	9	2	Fall	EN
Optional: Emergent & collective intelligence systems	9	2	Fall	EN
Optional: Evolvable hardware	9	2	Fall	EN
Optional: Advanced artificial intelligence	9	2	Fall	EN
Directed thesis research	3	2	Fall	EN
Research activity and internship	15	2	Spring	EN
Master thesis development and defense	15	2	Spring	EN

### Information Technology (Master)

Subject	ECTS	Year of study	Semester	Language
Optional: Distributed systems	9	1	Fall	EN
Optional: Testing of computer systems	9	1	Fall	EN
Optional: Data transmission, coding & compression	9	1	Fall	EN
Optional: Smart sensors and sensor networks	9	1	Fall	EN
Optional: Component based software engineering	9	1	Fall	EN
Optional: Advanced digital signal processing	9	1	Fall	EN
Research topics in information technology	3	1	Fall	EN
Optional: Advanced databases	9	1	Spring	EN
Optional: Development of complex distributed applications	9	1	Spring	EN
Optional: Information technology project management	9	1	Spring	EN
Optional: Integrated information systems	9	1	Spring	EN
Optional: Real time system design	9	1	Spring	EN
Optional: Cellular data networks	9	1	Spring	EN
Introduction to research	3	1	Spring	EN
Optional: Applied mathematics	9	2	Fall	EN
Optional: Emergent and collective intelligence systems	9	2	Fall	EN
Optional: Advanced web programming	9	2	Fall	EN
Optional: Advanced software technologies	9	2	Fall	EN
Research activity and internship	15	2	Spring	EN
Master thesis development and defense	15	2	Spring	EN

### Software Engineering (Master)

Subject	ECTS	Year of study	Semester	Language
Optional: Advanced algorithms	9	1	Fall	EN
Optional: Programming language design and analysis	9	1	Fall	EN
Optional: Component based software engineering	9	1	Fall	EN
Optional: Compiler design	9	1	Fall	EN
Optional: Pattern recognition	9	1	Fall	EN
Optional: Graphics processing systems	9	1	Fall	EN
Research topics in software engineering	3	1	Fall	EN
Optional: Advanced databases	9	1	Spring	EN
Optional: Development of complex distributed applications	9	1	Spring	EN
Optional: Information technology project management	9	1	Spring	EN
Optional: Heuristic methods	9	1	Spring	EN
Introduction to research	3	1	Spring	EN
Optional: Advanced software technologies	9	2	Fall	EN
Optional: Advanced web programming	9	2	Fall	EN
Optional: Neural networks	9	2	Fall	EN
Optional: Parallel algorithms	9	2	Fall	EN
Directed thesis research	3	2	Fall	EN
Research activity and internship	15	2	Spring	EN
Master thesis development and defense	15	2	Spring	EN

## Computers and Information Technology (Bachelor)

Subject	ECTS	Year of study	Semester	Language
Mathematical analysis	5	1	Fall	EN
Algebra and geometry	4	1	Fall	EN
Electrical engineering fundamentals	4	1	Fall	EN
Computer programming	5	1	Fall	EN
Logic and discrete structures	5	1	Fall	EN
Foreign languages	2	1	Fall	EN
Sports	1	1	Fall	EN
Culture and civilization	2	1	Fall	EN
Applied activities (45 hours)	2	1	Fall	EN
Computer assisted mathematics	4	1	Spring	EN
Special mathematics (Probabilistics and statistics)	4	1	Spring	EN
Physics	4	1	Spring	EN
Electronic devices	4	1	Spring	EN
Programming techniques	4	1	Spring	EN
Digital logic	5	1	Spring	EN
Foreign languages	2	1	Spring	EN
Sports	1	1	Spring	EN
Applied activities (45 hours)	2	1	Spring	EN
Mechanical systems modeling	3	2	Fall	EN
Data structures and algorithms	5	2	Fall	EN
Object-oriented programming	4	2	Fall	EN
Measurement principles, techniques and devices	4	2	Fall	EN
Computer architecture	5	2	Fall	EN
Digital circuits and signals	4	2	Fall	EN
Communication	2	2	Fall	EN
Sports	1	2	Fall	EN
Applied Activities (45 hours)	2	2	Fall	EN
Microeconomics	3	2	Spring	EN
Algorithm design and analysis	4	2	Spring	EN
Software engineering fundamentals	5	2	Spring	EN
System theory and automatization	5	2	Spring	EN
Computer organization	5	2	Spring	EN
Integrated circuits / Fundamental concepts of programming languages	5	2	Spring	EN
Sports	1	2	Spring	EN
Applied activities (45 hours)	2	2	Spring	EN
Computer networks	4	3	Fall	EN
Fundamentals of computer engineering	5	3	Fall	EN
Operating systems	5	3	Fall	EN
Designing digital micro-systems	4	3	Fall	EN
Management	2	3	Fall	EN
Optional: Large-scale integrated circuits	4	3	Fall	EN
Optional: Detailed design of software systems	4	3	Fall	EN
Applied activities (45 hours)	2	3	Fall	EN
Optional: Digital signal processing	4	3	Fall	EN
Optional: Quality in information technology	4	3	Fall	EN
Optional: Programming in assembly language	4	3	Fall	EN
Optional: Web programming	4	3	Fall	EN

Marketing	2	3	Spring	EN
Fundamentals of artificial intelligence	4	3	Spring	EN
Embedded systems	5	3	Spring	EN
Graphics (and human-computer interface)	4	3	Spring	EN
Databases	5	3	Spring	EN
Optional: Microprocessor systems	4	3	Spring	EN
Optional: Computer engineering	4	3	Spring	EN
Optional: Complexity and computability	4	3	Spring	EN
Optional: The design and architecture of complex software systems	4	3	Spring	EN
Optional: Input-output systems	4	3	Spring	EN
Optional: Semiconductor memories	4	3	Spring	EN
Optional: Programming computer networks	4	3	Spring	EN
Optional: Data exploring	4	3	Spring	EN
Applied activities (45 hours)	2	3	Spring	EN
Preparation of bachelor's degree thesis	5	4	Spring	EN

### 2.4.3. FACULTY OF CIVIL ENGINEERING

#### Advanced design of steel and composite structures (Master)

Subject	ECTS	Year of study	Semester	Language
Theory of elasticity and plasticity	8	1	Fall	EN
Advanced finite element analysis	7	1	Fall	EN
Research and design assisted by testing	7	1	Fall	EN
Life cycle analysis for building structures	8	1	Fall	EN
Robustness of structures under extreme actions	7	1	Spring	EN
Performance based seismic design	8	1	Spring	EN
Advanced design of composite steel-concrete structures	8	1	Spring	EN
Introduction to fire design	7	1	Spring	EN
Optional: Cold-formed steel structures	8	2	Fall	EN
Optional: Steel and composite steel-concrete bridges	8	2	Fall	EN
Optional: High-rise steel buildings	8	2	Fall	EN
Optional: Structures for buildings with large spans	8	2	Fall	EN
Optional: Aluminum structures	7	2	Fall	EN
Optional: Metallic shell structures	7	2	Fall	EN
Advanced Fire Design	7	2	Fall	EN
Research Activity - 7 weeks	15	2	Spring	EN
Development and Defense of Master Thesis	15	2	Spring	EN

#### Civil engineering (Bachelor)

Subject	ECTS	Year of study	Semester	Language
Mathematics1	4	1	Fall	EN, DE
Mathematics2	4	1	Fall	EN, DE
Surveying (Geodesy)	4	1	Fall	EN, DE
General chemistry	5	1	Fall	EN, DE
Introduction to computer programming	4	1	Fall	EN, DE
Culture and civilization	2	1	Fall	EN, DE
Second language1	2	1	Fall	EN, DE
Sport1	1	1	Fall	EN, DE
Experimental data processing	2	1	Fall	EN, DE

Practical training (45 hours)	2	1	Fall	EN, DE
Mathematics3	4	1	Spring	EN, DE
Mathematics4	4	1	Spring	EN, DE
Material science1	4	1	Spring	EN, DE
Mechanics	4	1	Spring	EN, DE
Physics	5	1	Spring	EN, DE
Applied computer programming	4	1	Spring	EN, DE
Second language2	2	1	Spring	EN, DE
Sport2	1	1	Spring	EN, DE
Practical training (45 hours)	2	1	Spring	EN, DE
Mechanics of materials1	5	2	Fall	EN, DE
Electrical engineering fundamentals and introduction in thermodynamics	3	2	Fall	EN, DE
Fluid mechanics and machines	4	2	Fall	EN, DE
Material science II (building materials)	4	2	Fall	EN, DE
Engineering geology	3	2	Fall	EN, DE
Engineering graphics	4	2	Fall	EN, DE
Architecture for engineers	2	2	Fall	EN, DE
Second language3	2	2	Fall	EN, DE
Sport3	1	2	Fall	EN, DE
Practical training (45 hours)	2	2	Fall	EN, DE
Mechanics of materials2	5	2	Spring	EN, DE
Microeconomics	4	2	Spring	EN, DE
Basis of structural design	4	2	Spring	EN, DE
Introduction to environmental engineering	2	2	Spring	EN, DE
Engineering geology building physics	4	2	Spring	EN, DE
Structural analysis 1	4	2	Spring	EN, DE
Highway and traffic engineering	2	2	Spring	EN, DE
Engineering ethics and communication	2	2	Spring	EN, DE
Sport4	1	2	Spring	EN, DE
Practical training (45 hours)	2	2	Spring	EN, DE
Structural analysis 2	5	3	Fall	EN, DE
Concrete 1	5	3	Fall	EN, DE
Metal constructions 1	5	3	Fall	EN, DE
Foundations	5	3	Fall	EN, DE
Optional: Timber structures	3	3	Fall	EN, DE
Optional: Timber bridges	3	3	Fall	EN, DE
Soil and rock mechanics	3	3	Fall	EN, DE
Marketing and building legislation	2	3	Fall	EN, DE
Practical training (45 hours)	2	3	Fall	EN, DE



Dynamics and earthquake engineering	4	3	Spring	EN, DE
Concrete 2	5	3	Spring	EN, DE
Metal constructions 2	4	3	Spring	EN, DE
Buildings 1	4	3	Spring	EN, DE
Technology 1	4	3	Spring	EN, DE
Introduction to FEA	3	3	Spring	EN, DE
Management	2	3	Spring	EN, DE
Building services	2	3	Spring	EN, DE
Practical training(45 hours)	2	3	Spring	EN, DE
Reinforced and prestressed concrete structures	5	4	Fall	EN, DE
Metal structures	4	4	Fall	EN, DE
Buildings II	4	4	Fall	EN, DE
Management of constructions and building sites	5	4	Fall	EN, DE
Building services	2	4	Fall	EN, DE
Optional: Special R.C. structures	5	4	Fall	EN, DE
Optional: Special metal structures	5	4	Fall	EN, DE
Optional: High performance concrete and composites	5	4	Fall	EN, DE
Optional: Structural glass	5	4	Fall	EN, DE
Optional: Bridges	3	4	Spring	EN, DE
Optional: Masonry and local materials structures	3	4	Spring	EN, DE
Optional: Materials & tech. for sustainable buildings	3	4	Spring	EN, DE
Optional: Technology for steel and composite structures	3	4	Spring	EN, DE
Optional: Composite steel concrete structures	4	4	Spring	EN, DE
Optional: Steel concrete composite bridges	4	4	Spring	EN, DE
Technology 2	5	4	Spring	EN, DE
Optional: Special techniques in foundation engineering	3	4	Spring	EN, DE
Optional: Sanitary and sewage	3	4	Spring	EN, DE
Diploma work	5	4	Spring	EN, DE
Defense of diploma work	10	4	Spring	EN, DE

### Civil engineering

Subject	ECTS	Year of study	Semester	Language
Preparation of bachelor's degree project in civil, industrial and agricultural constructions	5	4	Spring	EN,FR,DE
Preparation of bachelor's degree project in railways, roads and bridges engineering	5	4	Spring	EN,FR,DE
Preparation of bachelor's degree project in hydrotechnical developments and constructions	5	4	Spring	EN,FR,DE
Preparation of bachelor's degree project in land reclamation and improvement. Rural development	5	4	Spring	EN,FR,DE
Preparation of bachelor's degree project in sanitary engineering and environmental protection	5	4	Spring	EN,FR,DE
Preparation of bachelor's degree project in land measurement and cadastral survey	5	4	Spring	EN,FR,DE
Preparation of master's degree project in cadastre and the evaluation of immovables	15	2	Spring	EN,FR,DE

Preparation of master's degree project in sustainability: energetic audit and fire protection in buildings	15	2	Spring	EN,FR,DE
Preparation of master's degree project in transport infrastructure	15	2	Spring	EN,FR,DE
Preparation of master's degree project in environmental protection engineering	15	2	Spring	EN,FR,DE
Preparation of master's degree project in engineering and sustainable rural development	15	2	Spring	EN,FR,DE
Preparation of master's degree project in optimization of sanitary eng. & env. protection systems exploitation	15	2	Spring	EN,FR,DE
Preparation of master's degree project in optimising and modernizing of building services systems	15	2	Spring	EN,FR,DE
Preparation of master's degree project in optimization of hydrotechnical systems	15	2	Spring	EN,FR,DE
Preparation of master's degree project in rehabilitation of buildings	15	2	Spring	EN,FR,DE
Preparation of master's degree project in foundation systems for special constructions	15	2	Spring	EN,FR,DE
Preparation of master's degree project in Structures	15	2	Spring	EN,FR,DE

#### Sustainable Constructions under Natural Hazards and Catastrophic Events (Erasmus Mundus Master)

Subject	ECTS	Year of study	Semester	Language
Design of sustainable constructions	6	1	Fall	EN
Conceptual design of buildings	6	1	Fall	EN
Conceptual design of bridges	6	1	Fall	EN
Local culture and language	2	1	Fall	EN
Optional 1: Advanced design of glass structures	5	1	Fall	EN
Optional 2: Advanced design of timber structures	5	1	Fall	EN
Optional 3: Rehabilitation and maintenance of structures	5	1	Fall	EN
Advanced design of steel end composite structures	6	1	Spring	EN
Design for seismic and climate changes	6	1	Spring	EN
Design for fire and robustness	6	1	Spring	EN
Business economics and entrepreneurship	2	1	Spring	EN
Optional 4: Design for renewable energy systems	5	1	Spring	EN
Optional 5: Advanced design of concrete structures	5	1	Spring	EN
Optional 6: Design of aluminum & stainless steel structures	5	1	Spring	EN
Preparation and defense of degree thesis	30	2	Fall	EN

#### **2.4.4. FACULTY OF COMMUNICATION SCIENCES**

##### Communication Sciences

Subject	ECTS	Year of study	Semester	Language
Preparation of bachelor's degree thesis in communication and public relations	5	3	Spring	EN,FR,DE
Preparation of bachelor's degree thesis in translation and interpreting	5	3	Spring	EN,FR,DE
Preparation of master's degree thesis in communication, public relations and digital media	15	2	Spring	EN,FR,DE

## 2.4.5. FACULTY OF ELECTRICAL AND POWER ENGINEERING

### Electrical and Power Engineering

Subject	ECTS	Year of study	Semester	Language
Preparation of bachelor's degree project in electrotechnics	5	4	Spring	EN,FR,DE
Preparation of bachelor's degree project in power systems engineering	5	4	Spring	EN,FR,DE
Preparation of master's degree project in power systems command and control	15	2	Spring	EN,FR,DE
Preparation of master's degree project in electrotechnics and power electronics	15	2	Spring	EN,FR,DE
Preparation of master's degree project in renewable energy (solar energy)	15	2	Spring	EN,FR,DE

## 2.4.6. FACULTY OF ELECTRONICS AND TELECOMMUNICATIONS

### Communication Networks Engineering (Master)

Subject	ECTS	Year of study	Semester	Language
Antennas and wave propagation	8	1	Fall	EN
Advanced topics in signal processing	7	1	Fall	EN
Selected topics in communication engineering	8	1	Fall	EN
Optional: Modern programming techniques	7	1	Fall	EN
Optional: PCBA design and manufacturing	7	1	Fall	EN
Optional: Mathematical morphology	7	1	Fall	EN
Pattern recognition	8	1	Spring	EN
Networks modeling	7	1	Spring	EN
Video networks	8	1	Spring	EN
Optional: Network planning	7	1	Spring	EN
Optional: Computer networks administration	7	1	Spring	EN
Mobile communication networks	8	2	Fall	EN
Optical communication systems and networks	8	2	Fall	EN
Optional : Resource management in wireless networks	7	2	Fall	EN
Optional: Broadband communication networks	7	2	Fall	EN
Optional: Advanced multimedia technologies	7	2	Fall	EN
Optional: Spectral analysis and estimation	7	2	Fall	EN
Practical training/research	15	2	Spring	EN
Master thesis elaboration	15	2	Spring	EN

### Electronics and Telecommunications (Bachelor)

Subject	ECTS	Year of study	Semester	Language
Mathematics I	4	1	Fall	EN
Mathematics II	4	1	Fall	EN
Mechanics	4	1	Fall	EN
Electrical circuits	5	1	Fall	EN
Introduction to computer programming	4	1	Fall	EN
Culture and civilization	2	1	Fall	EN
Second language	2	1	Fall	EN
Experimental data processing	2	1	Fall	EN
Sport	1	1	Fall	EN
Practical training (45 hours)	2	1	Fall	EN

Mathematics III	4	1	Spring	EN
Mathematics IV	4	1	Spring	EN
Materials science	4	1	Spring	EN
Physics	5	1	Spring	EN
Electronic devices	4	1	Spring	EN
Applied computer programming	4	1	Spring	EN
Second language	2	1	Spring	EN
Sport	1	1	Spring	EN
Practical training (45 hours)	2	1	Spring	EN
Electronic circuits	5	2	Fall	EN
Engineering electromagnetics	4	2	Fall	EN
Signals and systems	4	2	Fall	EN
Digital integrated circuits	4	2	Fall	EN
Computer aided design	4	2	Fall	EN
Electrical and electronic measurements	4	2	Fall	EN
Second language	2	2	Fall	EN
Sport	1	2	Fall	EN
Practical training (45 hours)	2	2	Fall	EN
Analog integrated circuits	4	2	Spring	EN
Microeconomics	3	2	Spring	EN
Computer networks architecture	4	2	Spring	EN
Object oriented programming	4	2	Spring	EN
Signal processing	5	2	Spring	EN
Microprocessors and microcontrollers	5	2	Spring	EN
Electronic circuits project	2	2	Spring	EN
Sport	1	2	Spring	EN
Practical training (45 hours)	2	2	Spring	EN
Management and marketing	4	3	Fall	EN
Electronic instrumentation	4	3	Fall	EN
Radio communications	4	3	Fall	EN
Virtual instrumentation	4	3	Fall	EN
Information theory and coding	4	3	Fall	EN
Data communications	4	3	Fall	EN
High frequency techniques	4	3	Fall	EN
Practical training (45 hours)	2	3	Fall	EN
Optional: Electromagnetic compatibility	4	3	Spring	EN
Optional: Digital switching systems	4	3	Spring	EN
Programmable logic systems	5	3	Spring	EN
Power electronics	4	3	Spring	EN
Embedded systems	4	3	Spring	EN
Digital telephony	5	3	Spring	EN
Audio and video systems	4	3	Spring	EN
Engineering ethics and communication	2	3	Spring	EN
Practical training (45 hours)	2	3	Spring	EN
Electronic equipment testing	5	4	Fall	EN
Software development	5	4	Fall	EN
Modeling and simulation	5	4	Fall	EN

Optional: VHDL	4	4	Fall	EN
Optional: Digital signal processors	4	4	Fall	EN
Microelectronics	5	4	Fall	EN
Integrated digital networks	4	4	Fall	EN
Project (for an optional subject)	2	4	Fall	EN
Optional: Digital radio communications	3	4	Spring	EN
Optional: Optical communications	3	4	Spring	EN
Optional: Image processing	3	4	Spring	EN
Optional: Biomedical electronics	3	4	Spring	EN
Electronic packaging	3	4	Spring	EN
Wireless communications	3	4	Spring	EN
Software project	3	4	Spring	EN
Diploma work	5	4	Spring	EN
Defense of diploma work	10	4	Spring	EN

### Electronics and Telecommunications

Subject	ECTS	Year of study	Semester	Language
Preparation of bachelor's degree project in applied electronics	5	4	Spring	EN,FR,DE
Preparation of master's degree project in multimedia technologies	15	2	Spring	EN,FR,DE
Preparation of master's degree project in biomedical electronics	15	2	Spring	EN,FR,DE
Preparation of master's degree project in intelligent electronic systems	15	2	Spring	EN,FR,DE
Preparation of master's degree project in telecommunications networks engineering	15	2	Spring	EN,FR,DE
Preparation of master's degree project in advanced electronics techniques	15	2	Spring	EN,FR,DE

### Traitement du signal (Master)

Subject	ECTS	Year of study	Semester	Language
Les applications des réseaux de neurones	7	1	Fall	FR
Techniques adaptatives de télécommunications	7	1	Fall	FR
Traitement statistique du signal	7	1	Spring	FR
Représentations temps-fréquence	8	1	Spring	FR
Traitement d'images	8	1	Spring	FR
Techniques d'estimation aveugle	7	2	Fall	FR
Morphologie mathématique	8	2	Fall	FR
Technologies de diversification	8	2	Fall	FR
Option: Fondements de traitement du signal	8	1	Fall	FR
Option: Signaux& systèmes de comm. numériques	8	1	Fall	FR
Option: Processeurs et systèmes d'acquisition	8	1	Fall	FR
Option: Techniques modernes de programmation	8	1	Fall	FR
Option: Modélisation statistique et stochastique	8	1	Fall	FR
Option: Circuits spécifiques pour les communications avec les mobiles	7	1	Spring	FR

Option: Simulation de réseaux de communications	7	1	Spring	FR
Option: Administration de réseaux informatiques	7	1	Spring	FR
Option: Traitement des signaux biomédicaux	7	1	Spring	FR
Stage	15	2	Spring	FR
Option: Communications sur des canaux variables en temps	7	2	Fall	FR
Option: Services numériques électroniques	7	2	Fall	FR
Option: Réseaux à large bande	7	2	Fall	FR
Option: Algorithmes et techniques de modélisation	7	2	Fall	FR
Dissertation	15	2	Spring	FR

## 2.4.7. FACULTY OF ENGINEERING IN HUNEDOARA

### Engineering programmes

Subject	ECTS	Year of study	Semester	Language
Preparation of bachelor's degree project in electro-mechanics	5	4	Spring	EN,FR,DE
Preparation of bachelor's degree project in materials process engineering	5	4	Spring	EN,FR,DE
Preparation of bachelor's degree project in road vehicles	5	4	Spring	EN,FR,DE
Preparation of bachelor's degree project in economic engineering in the field of mechanics	5	4	Spring	EN,FR,DE
Preparation of bachelor's degree project in economic engineering in the chemical and material industries	5	4	Spring	EN,FR,DE
Preparation of bachelor's degree project in industrial informatics	5	4	Spring	EN,FR,DE
Preparation of master's degree project in engineering and management of sustainable development in the materials industry	15	2	Spring	EN,FR,DE
Preparation of master's degree project in engineering and management of mechanical systems	15	2	Spring	EN,FR,DE
Preparation of master's degree project in advanced materials and technologies for automotive industry	15	2	Spring	EN,FR,DE
Preparation of master's degree project in advanced systems for industrial use of electricity	15	2	Spring	EN,FR,DE
Preparation of master's degree project in computer techniques in electrical engineering	15	2	Spring	EN,FR,DE

## 2.4.8. FACULTY OF INDUSTRIAL CHEMISTRY AND ENVIRONMENTAL ENGINEERING

### Industrial chemistry and environmental engineering

Subject	ECTS	Year of study	Semester	Language
Preparation of bachelor's degree project in food chemistry and biochemical technologies	5	4	Spring	EN,FR,DE
Preparation of bachelor's degree project in inorganic substances engineering and environmental protection	5	4	Spring	EN,FR,DE
Preparation of bachelor's degree project in chemistry and eng. of organic substances, oil chemistry & charcoal chemistry	5	4	Spring	EN,FR,DE

Preparation of bachelor's degree in environmental eng. and protection in industry	5	4	Spring	EN,FR,DE
Preparation of bachelor's degree in biotechnical and ecological systems engineering	5	4	Spring	EN,FR,DE
Preparation of master's degree project in controlling and advising of foods	15	2	Spring	EN,FR,DE
Preparation of master's degree project in environmental engineering and management in industry	15	2	Spring	EN,FR,DE
Preparation of master's degree project in micro and nano-materials	15	2	Spring	EN,FR,DE
Preparation of master's degree project in clean process technologies	15	2	Spring	EN,FR,DE

## 2.4.9. FACULTY OF MANAGEMENT IN PRODUCTION AND TRANSPORTATION

### Engineering and management

Subject	ECTS	Year of study	Semester	Language
Preparation of bachelor's degree thesis in industrial economic engineering	5	4	Spring	EN,FR,DE
Preparation of bachelor's degree thesis in economic engineering in construction	5	4	Spring	EN,FR,DE
Preparation of bachelor's degree thesis in economic engineering in the chemical and material industries	5	4	Spring	EN,FR,DE
Preparation of bachelor's degree thesis in economic eng. in the electrical, electronics and power fields	5	4	Spring	EN,FR,DE
Preparation of master's degree thesis in competitiveness engineering and management	15	2	Spring	EN,FR,DE
Preparation of master's degree thesis in logistics systems engineering and management	15	2	Spring	EN,FR,DE
Preparation of master's degree thesis in business administration	15	2	Spring	EN,FR,DE

### Administrative sciences

Subject	ECTS	Year of study	Semester	Language
Preparation of bachelor's degree thesis in public administration	5	3	Spring	EN,FR,DE

## 2.4.10. FACULTY OF MECHANICAL ENGINEERING

### Advanced materials and technologies (Master)

Subject	ECTS	Year of study	Semester	Language
Nanomaterials	8	1	Fall	EN
Numerical distribution of continuous fields in advanced materials	4	1	Fall	EN
Design of fiber reinforced materials	5	1	Spring	EN
Optional: Simulation of mass and heat transfer	10	1	Fall	EN
Optional: Particulate and cellular materials	8	1	Fall	EN

### Automotive engineering

Subject	ECTS	Year of study	Semester	Language
Preparation of bachelor's degree project in automotive engineering (road vehicles)	5	4	Spring	EN,FR,DE
Preparation of master's degree project in propulsion system's engineering for motor vehicles	15	2	Spring	EN,FR,DE

### Energy and ecology for thermal and transport systems (Master)

Subject	ECTS	Year of study	Semester	Language
Advanced thermodynamic cycles	8	1	Fall	EN
Design of thermal systems	8	1	Fall	EN
Combustion theory	6	1	Fall	EN
Genesis, control and dispersion of pollutants	8	1	Spring	EN
Thermal energy conversion systems	8	1	Spring	EN
Fuels and injection equipments	6	1	Spring	EN
Project management	8	2	Fall	EN
Management of bio-energy systems	8	2	Fall	EN
Preparation of master's degree project	15	2	Spring	EN

### Ergoengineering (Master)

Subject	ECTS	Year of study	Semester	Language
Advanced ergonomics	8	1	Spring	EN
Optional: Advanced materials	6	1	Spring	EN
Human centered design	8	1	Spring	EN
Occupational biomechanics	8	1	Fall	EN
Modeling and simulation of technical & biological systems	8	2	Fall	EN
Occupational therapy	8	2	Fall	EN
Preparation of master's degree project	15	2	Spring	EN

### Industrial engineering

Subject	ECTS	Year of study	Semester	Language
Preparation of bachelor's degree project in manufacturing engineering	5	4	Spring	EN,FR,DE
Preparation of master's degree project in polymeric and composite products engineering	15	2	Spring	EN,FR,DE
Preparation of master's degree project in integrated engineering	15	2	Spring	EN,FR,DE
Preparation of master's degree project in productive welding processes in protective gasses	15	2	Spring	EN,FR,DE

### Materials engineering

Subject	ECTS	Year of study	Semester	Language
Preparation of bachelor's degree project in materials science	5	4	Spring	EN,FR,DE
Preparation of master's degree project in advanced materials and technologies	15	2	Spring	EN,FR,DE



### Mechanical Engineering

Subject	ECTS	Year of study	Semester	Language
Preparation of bachelor's degree project in mechanical engineering	5	4	Spring	EN,FR,DE
Preparation of bachelor's degree project in machines and plants for agriculture & food industry	5	4	Spring	EN,FR,DE
Preparation of bachelor's degree project in hydraulic and pneumatic machines and systems	5	4	Spring	EN,FR,DE
Preparation of master's degree project in hydrodynamic machines and hydro-mechanical systems	15	2	Spring	EN,FR,DE
Preparation of master's degree project in engineering relationships of work, health and work security	15	2	Spring	EN,FR,DE
Preparation of master's degree project in the engineering of renewable energy resources	15	2	Spring	EN,FR,DE
Preparation of master's degree project in advanced mechanical engineering	15	2	Spring	EN,FR,DE
Preparation of master's degree project in quality management for technological processes	15	2	Spring	EN,FR,DE
Preparation of master's degree project in modern railway systems	15	2	Spring	EN,FR,DE
Preparation of master's degree project in integrated systems for agri-food production	15	2	Spring	EN,FR,DE

### Mechatronics and Robotics

Subject	ECTS	Year of study	Semester	Language
Preparation of bachelor's degree project in mechatronics and robotics	5	4	Spring	EN,FR,DE
Preparation of master's degree project in artificially intelligent robotic systems	15	4	Spring	EN,FR,DE

### Medical engineering

Subject	ECTS	Year of study	Semester	Language
Preparation of bachelor's degree project in medical eng.	5	4	Spring	EN,FR,DE
Preparation of master's degree project in statistical methods and techniques in health care and clinical research	15	2	Spring	EN,FR,DE
Preparation of master's degree project in implants, prostheses and biomechanical evaluation	15	2	Spring	EN,FR,DE

### Propulsion Systems engineering for motor vehicles (Master)

Subject	ECTS	Year of study	Semester	Language
Motor vehicles engines I	8	1	Fall	EN
Motor vehicles engines II	8	1	Spring	EN
Legislation and homologation of motor's vehicles	7	1	Fall	EN
Fuels and injection equipments	7	1	Spring	EN
Powertrain optimization through numerical modelation	8	1	Fall	EN
Urban, periurban and regional public transport	8	1	Spring	EN
Optional: Engine and powertrain diagnosis	7	1	Spring	EN
Unconventional propulsion systems	8	2	Fall	EN
Vehicles dynamics modelation	7	2	Fall	EN

Optional: Engine cooling systems	7	1	Fall	EN
Optional: Dynamics and exploration of road accidents	8	2	Fall	EN
Optional: Acquisition and processing experimental data	7	2	Fall	EN

#### Quality engineering in mechatronics and robotics (Master)

Subject	ECTS	Year of study	Semester	Language
Computer aided quality analysis	8	1	Spring	EN
Reliability of mechatronic systems	7	1	Spring	EN
3D Modelling	7	1	Fall	EN
Optional: Statistical process control	5	1	Fall	EN
Optional: Shape integration and mechatronic systems configuration	8	1	Spring	EN
Optional: Programmable logic controllers	8	2	Fall	EN
Human machine interface	7	2	Fall	EN
Preparation of master's degree project	15	2	Spring	EN

#### Robotic systems with artificial intelligence (Master)

Subject	ECTS	Year of study	Semester	Language
3D Modelling	8	1	Fall	EN
Structural analysis in robotics	8	1	Spring	EN
CAD/CAM/CAE Systems (CATIA)	8	1	Spring	EN
Optional: Advanced mathematics in robotics	7	1	Fall	EN
Optional: Artificial intelligence for robotics	7	1	Spring	EN
Optional: Human machine interface	7	2	Fall	EN
Preparation of master's degree project in robotic systems with artificial intelligence	15	2	Spring	EN

#### Transportation and traffic engineering

Subject	ECTS	Year of study	Semester	Language
Preparation of bachelor's degree project in transport and traffic engineering	5	4	Spring	EN,FR,DE
Preparation of master's degree project in advanced techniques in road transport	15	2	Spring	EN,FR,DE

# CHAPTER 3. PRACTICAL INFORMATION FOR INTERNATIONAL EXCHANGE STUDENTS

## 3.1. ADMISSION PROCEDURES

All incoming exchange students should be nominated by their home university by:

- a) Fall semester: 15th of June
- b) Spring semester: 15th of December

The nomination letter will be sent to Prof. Dr. eng. Lia DOLGA, Head of the Department for International Relations, [lia.dolga@upt.ro](mailto:lia.dolga@upt.ro) and must specify clearly within which programme the mobility will take place (Erasmus+, CEEPUS, bilateral agreement, double-degree programme, etc.).

Please note that although Politehnica University of Timișoara does not accept free-movers, we are open to signing new cooperation agreements. Proposals for new agreements and proposals to extend existing agreements to new study fields should be directed to Prof. Dr. eng. Lia DOLGA, Head of the Department for International Relations, [lia.dolga@upt.ro](mailto:lia.dolga@upt.ro).

Nominations which reach us after the deadlines will be processed if time allows.

The student application file consists of:

- a) Student application form
- b) Accommodation form (optional)
- c) Learning or training agreement proposal
- d) Buddy request form (optional)

The forms can be downloaded from: <http://www.upt.ro/international>

The application documents will be filled in and signed by each incoming student. The learning or training agreement has to be signed by the student and pre-approved by the home university. The application file will be submitted by e-mail to Mrs. Loredana NENESTEANU ([loredana.nenesteanu@upt.ro](mailto:loredana.nenesteanu@upt.ro)).

The letter of acceptance and the approved learning/training agreement will be sent by e-mail to the candidate within 5 weeks after the application deadline.

No language certificate is required for admission, however for a successful stay we recommend a minimum level of B1 for the language in which the studies/ internship will be carried out.

### 3.2. VISA, RESIDENCE PERMIT, REGISTRATION, HEALTH INSURANCE

Incoming exchange students should have a valid passport and/or identity card for the entire period of time to be spent in Timișoara:

- Exchange students who are EU citizens do not need a visa to entry or study in Romania
- Non-EU students must apply for a student visa at the Romanian Embassy in the country of their home university. The acceptance letter and learning/training agreement will support their visa application file. Upon arrival, all non-EU citizens have to register to the Immigration Office in Timișoara, Street Andrei Mocioni No. 8. The staff of the Department for International Relations will provide them with up-to-date information and the documents needed to obtain the residence permit.

We encourage all incoming exchange students to apply for the European Health Insurance Card or contract an equivalent health insurance policy before arrival. The European Health Insurance Card provides international students with the same health insurance rights and benefits as Romanian citizens. In the student campus a medical centre offer medical services to students, as well as referrals to specialists.

Politehnica University of Timișoara has a limited infrastructure to welcome students with physical disabilities. Please contact Prof. Dr. ing. Lia DOLGA ([lia.dolga@upt.ro](mailto:lia.dolga@upt.ro)) to check if we can offer the conditions needed for a successful stay of a disabled student. Each case has to be analysed individually.

All Incoming exchange students should inform Mrs. Loredana NENESTEANU ([loredana.nenesteanu@upt.ro](mailto:loredana.nenesteanu@upt.ro)) at least one week in advance about their exact arrival date and time in Timișoara and make an appointment for registration. Registration is done at the Department for International Relations (UPT Rectorate Building: Piața Victoriei n.2, 3rd floor, office 319) from Monday to Thursday between 12 a.m. and 3 p.m.

For registration the student will present:

- his/her identity card or passport with the required visa for non-EU citizens
- two identity card photos (3 cmx4 cm) for the student card.
- any documents required by the home university to be signed at arrival at the host university (certificate of attendance, learning or training agreement, etc.)

### 3.3. ACCOMMODATION, CATERING AND COST OF LIVING

Accommodation in a student residence can be booked for all incoming international students. Incoming exchange students are hosted in student residences 11C, 8C or 14C (if necessary).

For the Residence no. 11C, the address is:

Complexul Studentesc

Street Aleea Studentilor, nr. 11C.

Contact person: Mrs. Ana CUCU, administrator

All the students are expected to arrive at the student residence from Monday till Friday, between 8 a.m. and 4 p.m. If the student will arrive later or during the weekend and he/she informed Mrs. Loredana NENESTEANU with at least a week in advance about his/her exact arrival day and time, the student will pick up the key and entry card from Student Residence 8C (Street Aleea Studentilor, nr. 8C). To sign de accommodation contract a copy of the identity card or passport and two small identity photos (3 cm X 4 cm) will be needed.

All student residences are situated within a walking distance from the UPT buildings (various faculty buildings, library, sports centers, student restaurants, etc) and the city centre. There are no reservation taxes to be paid in advance. The accommodation cost will be around 50 Euro/month.

We do not advise exchange students to come to Timișoara without booking their room at least for the first month in the student residence. Finding a furnished room on the private market for a short period of time can be difficult and expensive. Our office has no possibility to find private accommodation for the students.

The accommodation conditions are as follows:

- 2 students / room. It is not possible to pay double in order to have the room to yourself. You may request however to stay in the same room with someone you know. Male and female students are not placed in the same room unless they both request it and they are married or related.
- Rooms have Internet connection, TV cable, fridge, furniture and bed linen. Students do not pay utilities.
- Shared bathrooms, laundry rooms, reading rooms & kitchens. Irons, ironing boards, cooking ware and tableware will not be provided.
- Student residences have security systems which include video surveillance and entry based on electronic cards.

The accommodation fee will be paid monthly using a credit or debit card. It is not possible to pay the accommodation using cash.

Please note that student residences have rules. Failure to comply with the rules can generate fines, and if the offenses are repeated the student can be evicted from the residence. We strongly recommend reading the accommodation contract carefully as an English version will be provided upon check in. It is also possible to read a sample accommodation contract on the Department of International Relations webpage in the incoming students section.

Students who do not cook their own food can buy from the administrator of the residence meal tickets. Each ticket ensures one meal at a price of approx. 2 EUR. For 5 tickets, the student will pay approx. 8 EUR (1 free ticket for every 4 bought). These tickets can be used in the two student cafeterias of UPT. Most student residences have vending machines.

Life in Romania is not expensive, so an amount of 400 EUR should allow you a pleasant stay in Timisoara. This amount would cover your accommodation in the student residence, food, clothes, books, attending social and cultural events and some trips.

Sample prices (1 EUR is between 4.4 and 4.5 lei):

#### Food and drinks:

Sesame pretzel: 1 leu

0.5 l water: 2.5 lei

1 l milk: 4 lei

1 kg flour: 3 lei

1 kg rice: 6 lei

6-pack beer: 12-15 lei (in supermarkets)

Fast food menu : 10-15 lei

Large pizza: 20 lei

Single trip bus ticket: 2 lei (regular), 2.5 lei (expres)

Loaf of bread: 3-4 lei

1 kg apples: 3 lei

1 pack spaghetti: 4 lei

1 kg chicken breast : 17 lei

1 beer bottle: starting from 5 lei (in clubs, restaurants, etc.)

Lunch daily offer in average restaurants: 10-15 lei

Sushi lunch: 40 lei

#### Culture:

Opera ticket: 25 lei (with student discount)

Theater ticket: 10-15 lei (with student discount)

3-months subscription to the French Institute Mediatheque: 23 lei (with student discount)

6-months subscription to the German Cultural Center Library: 15 lei (with student discount)

#### Others:

Clothing, shoes, electronics and books have prices similar to other EU countries.

Medical services tend to be less expensive than in most other EU countries.

### 3.4. SPORTS, ACADEMIC AND SOCIAL LIFE



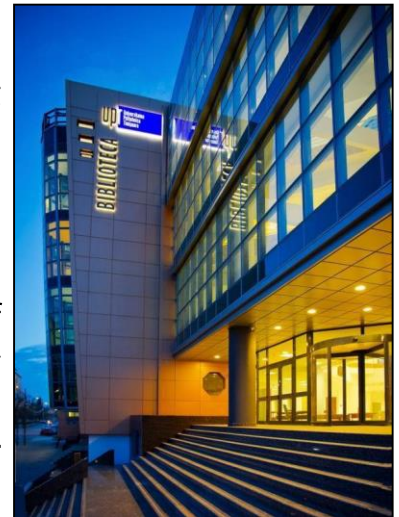
All incoming students have access free of charge to the sport facilities in the same conditions as the local students. There are two sports centers: Sport Centre 1 (fitness hall, football field, running track, covered mini-football fields) and Sport Centre 2 ( indoor and outdoor swimming pools with sauna and fitness equipment; basketball and volleyball courts; football fields; bitumen and tartan tennis fields; multipurpose buildings).



The library offers access to the documentary resources and services needed for education and research. Access to the library will be offered only after registration.

The buddy programme coordinated by the Department for International Relations aims to facilitate the integration of international students in the local student life. The exchange students who submit the buddy request form will be put in contact with a local student to guide them around the city and campus, as well as to answer any questions they might have.

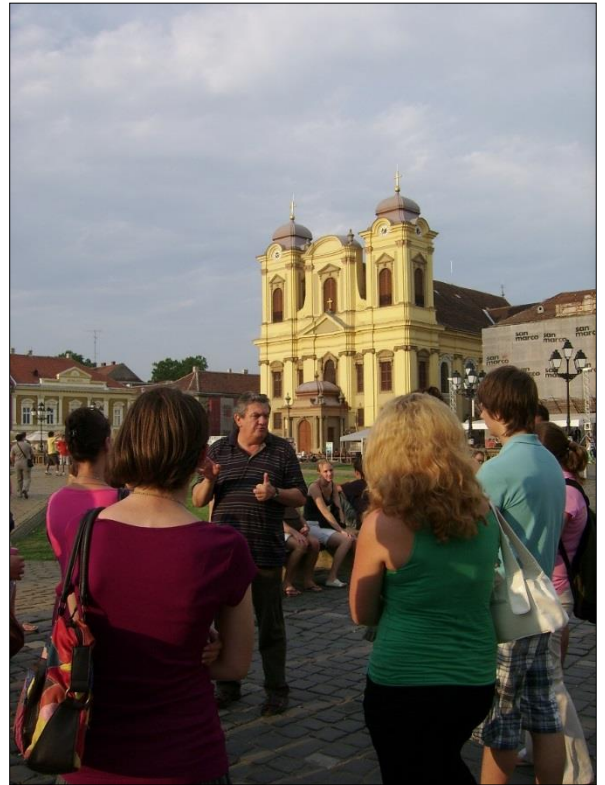
International exchange students are cordially invited to participate in the projects of the UPT student organisations: Board of European Students of Technology Timișoara; Faculty of Architecture Student Association; Faculty of Automation and Computer Science Student League ; Faculty of Civil Engineering Student Organisation; Faculty of Electrical and Power Engineering Student League; Faculty of Electronics and Telecommunications Student League; Faculty of Engineering in Hunedoara Student League; Faculty of Industrial Chemistry and Environmental Engineering Student League; Faculty of Management in Production and Transportation Student League; Faculty of Mechanical Engineering Student League.



Central Library of  
Politehnica University of  
Timisoara



Welcome day for Erasmus students - February 2014



City tour for a group of incoming students



Winter trip with exchange students at the Semenic Mountain - February 2014



Intercultural evenings



Cruise on the Danube for Erasmus Intensive Programme students





Visit of the Iron Gate I Hydroelectric Power Station



Visit of the Sarmizegetusa Museum



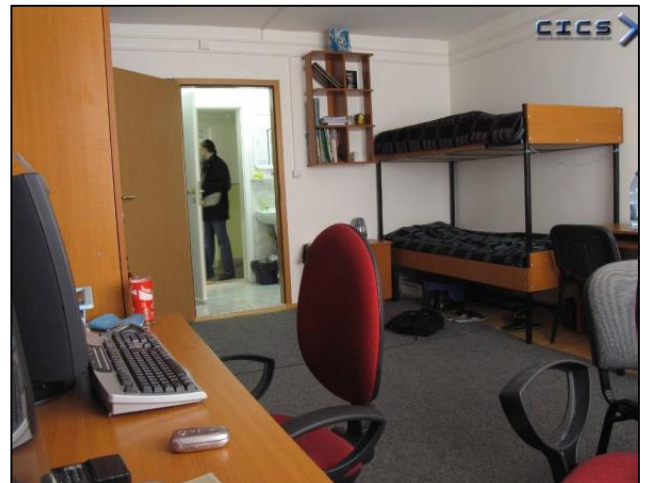
One of the UPT's student restaurants



Lunch at the UPT's student restaurant



Student residence buildings



Student residence room



# CHAPTER 4. PRACTICAL INFORMATION FOR INTERNATIONAL VISITING STAFF

## 4.1. INCOMING ERASMUS+ STAFF MOBILITY FOR TEACHING (STA)

Internationalisation is one of the priorities of Politehnica University of Timișoara. We are constantly interested in receiving visitors, in creating new contacts and in reinforcing the existing cooperation with our partners.

Guest teaching assignments can be arranged at Politehnica University of Timișoara under existing Erasmus+ agreements. With the Erasmus+ Programme the sending out-principle holds, which means that in each case the university sending a teaching staff finances his or her stay abroad. Regarding the financing of travel expenses, foreign teaching staff must approach their home university.

Teaching assignments can take several forms: open-lectures targeting students from a variety of study years, study levels and areas of specialisation; lectures included in the regular course-work of the students; intensive workshops; etc.

### Requirements:

- The guest lecturer comes for teaching purposes (at least 8 teaching hours per week) from one of our Erasmus+ partner universities;
- The mobility takes place during the teaching periods of the UPT academic calendar if the lectures target bachelor or master degree students, or between October and June if the lecture targets PhD students.
- The Department for International Relations is informed of the intended Incoming Teaching Staff Mobility. A standard form has to be filled in and submitted by e-mail to Mrs. Loredana NENESTEANU ([loredana.nenesteanu@upt.ro](mailto:loredana.nenesteanu@upt.ro)).

### Procedure:

- The future incoming staff member contacts DRI and sends the visiting staff form.
- The Department for International Relations issues and sends a letter of invitation to the guest lecturer in electronic format.
- The teaching plan is set by the guest lecturer in cooperation with the host UPT department. If the incoming lecturer does not have a contact person in the appropriate department at UPT, DRI will find and provide him/her with a contact person. The teaching plan will be agreed upon and signed in electronic format before the start of mobility.
- During the teaching mobility, a visit to the Department for International Relations will be planned.
- The Department for International Relations issues an official letter of confirmation for the Erasmus+ Teaching Staff Mobility.

Incoming staff can choose to stay in the hotels owned by Politehnica University of Timișoara. Both hotels are centrally located and offer single/double rooms with TV, refrigerator and Internet connection. Prices for single rooms vary between ~25 EUR (breakfast included) and ~35 EUR (breakfast, sauna and fitness facilities included). More details here: <http://www.upt.ro/en/camine-hotelier.php>.

## 4.2. INCOMING ERASMUS+ TEACHING AND ADMINISTRATIVE STAFF MOBILITY FOR TRAINING (STT)

We are happy to welcome teaching and administrative staff visitors for training according to the rules of the Erasmus+ Programme. If your university is on the list of Erasmus+ partner institutions and you wish to spend a training period at our university, please contact your Erasmus+ Institutional Coordinator and see what the requirements are for you to apply for an Erasmus+ staff training grant at your home institution. The duration of a training mobility can be between 5 days and 6 weeks.

For a good organization of your training at Politehnica University of Timisoara , we kindly ask you to fill in and send by e-mail the application form to [Loredana.Nenesteanu@upt.ro](mailto:Loredana.Nenesteanu@upt.ro).

### 4.2. LIST OF ERASMUS+ PARTNER UNIVERSITIES IN 2014-2015

Country	Erasmus Code	University
Austria	A GRAZ02	Technische Universitat Graz
Austria	A GRAZ10	Campus 02 Fachhochschule der Wirtschaft
Austria	A KLAGENF01	Alpen-Adria Universitat Klagenfurt
Austria	A SALZBUR08	Fachhochschule Salzburg GmbH (FHS)
Austria	A ST-POLT03	Fachhochschule St. Pölten GmbH
Austria	A WIEN20	Fachhochschule Technikum Wien
Belgium	B ANTWERP01	University of Antwerp
Belgium	B KORTRIJ01	VIVES University College
Belgium	B LIEGE01	Université de Liege
Belgium	B LIEGE38	Haute Ecole de la Province de Liège
Belgium	B LOUVAIN01	Université Catholique de Louvain
Belgium	B MONS21	Université de Mons
Bulgaria	BG SOFIA20	University of Chemical Technologies and Metallurgy
Bulgaria	BG SOFIA28	College of Telecommunications and Post
Cyprus	CY LIMASS002	Cyprus University of Technology
Czech Republic	CZ BRNO01	Brno University of Technology
Czech Republic	CZ CESKE01	University of South Bohemia in Ceske Budejovice
Czech Republic	CZ OSTRAVA01	Technical University of Ostrava
Czech Republic	CZ PRAHA07	Charles University in Prague
Czech Republic	CZ PRAHA10	Czech Technical University in Prague
Denmark	DK ALBORG01	Aalborg University

Finland	SF JOENSUU09	Karelia University of Applied Sciences
Finland	SF OULU11	Oulu University of Applied Sciences
France	F ALBI05	Ecole des Mines d'Albi-Carmaux
France	F AMIENS01	Université de Picardie Jules Verne
France	F ANGERS01	Université d'Angers
France	F ARRAS12	Université D'Artois
France	F BELFORT07	Ecole Supérieure des Technologies & des Affaires
France	F BORDEAU01	Université Bordeaux 1
France	F BORDEAU54	ENSEIRB MATMECA / IPB
France	F BREST01	Université de Bretagne Occidentale - U.B.O.
France	F BREST07	Ecole Nationale d'Ingenieurs de Brest
France	F BREST09	TELECOM Bretagne
France	F CLERMON02	Université Blaise Pascal Clermont II
France	F CLERMON25	Institut Français de Mécanique Avancée
France	F COMPIEG01	Université de Technologie de Compiègne
France	F DIJON01	Université de Bourgogne-Dijon
France	F DOUAI02	Ecole de Mines de Douai
France	F DUNKERQ09	Université du Littoral-côte D'opale
France	F EVRY04	Université d'Evry Val D'Esonne
France	F GRENOBL22	Institut Nationale Polytechnique de Grenoble
France	F LA-ROCH08	Université de La Rochelle
France	F LE-HAVR11	Université du Havre
France	F LILLE01	Université de Lille
France	F LILLE11	Université Catholique de Lille
France	F LIMOGES01	University of Limoges
France	F LIMOGES05	Ecole Nationale de Céramique Industrielle
France	F MONTPEL03	Université Paul Valery (Montpellier III)
France	F NANTES01	IUT de Nantes
France	F NICE01	Université de Nice Sophia Antipolis
France	F NOISY02	Ecole Supérieure d'Ingenieurs en Electronique et Electrotechnique
France	F ORLEANS01	Université d'Orleans
France	F PARIS006	Université Pierre et Marie Curie
France	F PARIS062	Ecole Nationale Supérieure D'Arts et Métiers (ENSAM)

France	F PARIS270	Pole Universitaire Leonard de Vinci
France	F PARIS379	Institut de management et communication intercultures
France	F PAU01	Université De Pau Et Des Pays De L'Adour
France	F RENNES01	Université de Rennes 1
France	F ST-ETIE01	Université Jean Monnet - Saint-Etienne
France	F TOULOUS03	Université Paul Sabatier - Toulouse 3
France	F TOULOUS28	Institut National Polytechnique De Toulouse
France	F VERSAIL11	Université de Versailles Saint-Quentin-en-Yvelines
Germany	D AUGSBUR01	Universität Augsburg
Germany	D BONN01	Rheinische Friedrich-Wilhelms-Universität Bonn
Germany	D BRAUNSC01	Technische Universität Carolo-Wilhelmina zu Braunschweig
Germany	D BREMEN01	Universität Bremen
Germany	D COBURG01	Hochschule für Angewandte Wissenschaften Coburg
Germany	D COTTBUS03	Brandenburg University of Technology Cottbus-Senftenberg
Germany	D DARMSTA02	Hochschule Darmstadt
Germany	D DORTMUN01	Technische Universität Dortmund
Germany	D DRESDEN02	Technische University Dresden
Germany	D EMDEN02	Hochschule Emden/Leer
Germany	D FREISIN01	Hochschule Weihenstephan-Triesdorf
Germany	D GELSENK02	Westfälische Hochschule
Germany	D HAMBURG03	Technische Universität Hamburg-Harburg
Germany	D HAMM01	Hochschule Hamm-Lippstadt
Germany	D HEIDELB05	SRH Hochschule
Germany	D ILMENAU01	Technische Universität Ilmenau
Germany	D INGOLST01	Technische Hochschule Ingolstadt
Germany	D JENA01	Friedrich Schiller University of Jena
Germany	D KARLSRU05	Hochschule Karlsruhe - Technik und Wirtschaft
Germany	D KONSTAN02	HTWG Hochschule Konstanz
Germany	D LORRACH01	Duale Hochschule Baden-Württemberg (DHBW) Lorrach
Germany	D MUNCHEN02	Technische Universität München
Germany	D OSNABRU02	Fachhochschule Osnabrück
Germany	D REGENSB02	Hochschule Regensburg
Germany	D ROSENHE01	Fachhochschule Rosenheim - University of Applied Science
Germany	D SAARBRU01	Universität des Saarlandes

Germany	D SIEGEN01	Universität Siegen
Germany	D STUTTGA01	Universität Stuttgart
Germany	D WILHELM02	Jade Hochschule
Greece	G ATHINE34	TEI Athens
Greece	G EGALE001	Technological Educational Institute of Piraeus
Greece	G KAVALO1	Kavala Institute of Technology
Greece	G PIREAS01	University of Piraeus
Greece	G THESSAL01	Aristotle University of Thessaloniki
Greece	G THESSAL12	Alexander Technological Educational Institute of Thessaloniki
Hungary	HU BAJA01	Eotvos Jozsef Foiskola
Hungary	HU BUDAPES02	University of Technology and Economics Budapest (BME)
Hungary	HU BUDAPES16	Obuda University
Hungary	HU GODOLLO01	Szent Istvan University
Hungary	HU KECSKEM02	Kecskemet College
Hungary	HU NYIREGY04	Nyiregyhaza Foiskola
Hungary	HU PECS01	University of Pecs
Hungary	HU SZEGED01	University of Szeged
Italy	I ANCONA01	Università Politecnica delle Marche
Italy	I BENEVENO2	Università Degli Studi Del Sannio
Italy	I CAGLIARO1	Università Degli Studi Di Cagliari
Italy	I CASSINO01	Università Degli Studi Di Cassino e Del Lazio Meridionale
Italy	I CHIETI01	Università degli studi G. D'Annunzio Chieti Pescara
Italy	I FERRARA01	Università Degli Studi di Ferrara
Italy	I FIRENZE01	Università Degli Studi di Firenze
Italy	I MILANO02	Politecnico Di Milano
Italy	I NAPOLI01	Università Degli Studi de Napoli Federico II
Italy	I PADOVA01	Università degli Studi di Padova
Italy	I PALERMO01	Università Degli Studi Di Palermo
Italy	I ROMA01	Università Degli Studi di Roma "La Sapienza"
Italy	I SALERNO01	Università Degli Studi Di Salerno
Italy	I SASSARIO1	Università degli Studi di Sassari
Italy	I TORINO02	Politecnico Di Torino
Italy	I TRENTO01	Università Degli Studi di Trento
Latvia	LV RIGA09	Turība University

Lithuania	LT KAUNAS02	Kaunas University of Technology
Lithuania	LT VILNIUS02	Vilnius Gediminas Technical University
Lithuania	LT VILNIUS23	Vilnius College of Design
Lithuania	LT VILNIUS24	Kazimieras Simonavicius University
Macedonia	MK OHRID01	University for Information Science and Technology St. Paul the Apostle
Macedonia	MK SKOPJE10	University American College Skopje
Netherlands	NL AMSTER01	Universiteit van Amsterdam
Netherlands	NL GRONING01	University of Groningen
Netherlands	NL NIJMEGE01	Radboud Universiteit Nijmegen
Netherlands	NL WAGENIN01	Wageningen University
Netherlands	NL ZWOLLE05	Windesheim University of Applied Sciences
Norway	N MOLDE01	Molde University College - Specialized University in Logistics
Poland	PL GLIWICE01	Politechnika Slaska
Poland	PL KRAKOW02	AGH University of Science and Technology
Poland	PL LODZ02	Lodz University of Technology
Poland	PL LUBLIN01	Maria Curie-Skłodowska University
Poland	PL SANOK01	Państwowa Wyższa Szkoła Zawodowa Im. Jana Grodka W Sanoku
Poland	PL WARSZAW02	Warszaw University of Technology
Portugal	P ARCOZELO1	Instituto Politécnico do Cávado e do Ave
Portugal	P BRAGA01	Universidade Do Minho
Portugal	P BRAGANC01	Instituto Politecnico de Braganca
Portugal	P COIMBRA01	Universidade de Coimbra
Portugal	P LEIRIA01	Polytechnic Institute Of Leiria
Portugal	P LISBOA03	Universidade Nova de Lisboa
Portugal	P PORTO02	Universidade de Porto
Portugal	P PORTO05	Instituto Politecnico do Porto ISEP
Slovakia	SK BRATISLO1	Slovenska Technicka Univerzita V Bratislave
Slovenia	SI CELJE03	International School for Social and Business Studies
Slovenia	SI LJUBLJA01	University of Ljubljana
Slovenia	SI MARIBOR01	University of Maribor
Spain	E BARCELO03	Universitat Politecnica de Catalunya
Spain	E BILBA001	Universidad del Pais Vasco
Spain	E BURGOS01	University of Burgos

Spain	E GIRONA02	Universitat de Girona
Spain	E GRANADA01	Escuela Tecnica Superior de Arquitectura de Granada
Spain	E MADRID05	Universidad Politecnica de Madrid
Spain	E MADRID160	Universidad a Distancia de Madrid
Spain	E OVIEDO01	Universidad de Oviedo
Spain	E SEVILLA01	Universidad de Sevilla
Spain	E VALLADO01	University of Valladolid
Spain	E VIGO01	University of Vigo
Sweden	S LINKOPI01	Linkopings Universitet
Sweden	S LULEA01	Lulea University of Technology
Turkey	TR ADANA01	Cukurova University
Turkey	TR ANKARA08	Cankaya University
Turkey	TR ANTALYA01	AKDENIZ UNIVERSITESI
Turkey	TR BURDUR01	Mehmet Akif Ersoy University
Turkey	TR ERZURUM01	Ataturk University
Turkey	TR ISTANBU03	Istanbul University
Turkey	TR ISTANBU07	Yildiz Technical University
Turkey	TR ISTANBU45	Nisantasi University
Turkey	TR KOCAELI02	Kocaeli University
Turkey	TR MUGLA01	Mugla Universitesi
Turkey	TR NIGDE01	Nigde Universitesi
Turkey	TR SAMSUN01	Ondokuz Mayis University
Turkey	TR SIIRT01	Siirt University
Turkey	TR VAN01	Yüzüncü Yıl Üniversitesi
United Kingdom	UK BRIGHT002	University of Brighton
United Kingdom	UK CANTERB01	University of Kent
United Kingdom	UK EDINBUR01	University of Edinburgh





**Editor:**

**Adriana IACOB**

**Department for International Relations**

**Politehnica University of Timișoara**



POLITEHNICA UNIVERSITY OF TIMIȘOARA

DEPARTMENT FOR INTERNATIONAL RELATIONS

PIAȚA VICTORIEI NR. 2 TIMIȘOARA 300006 JUD. TIMIȘ

ROMANIA

[www.upt.ro/international](http://www.upt.ro/international)

2014