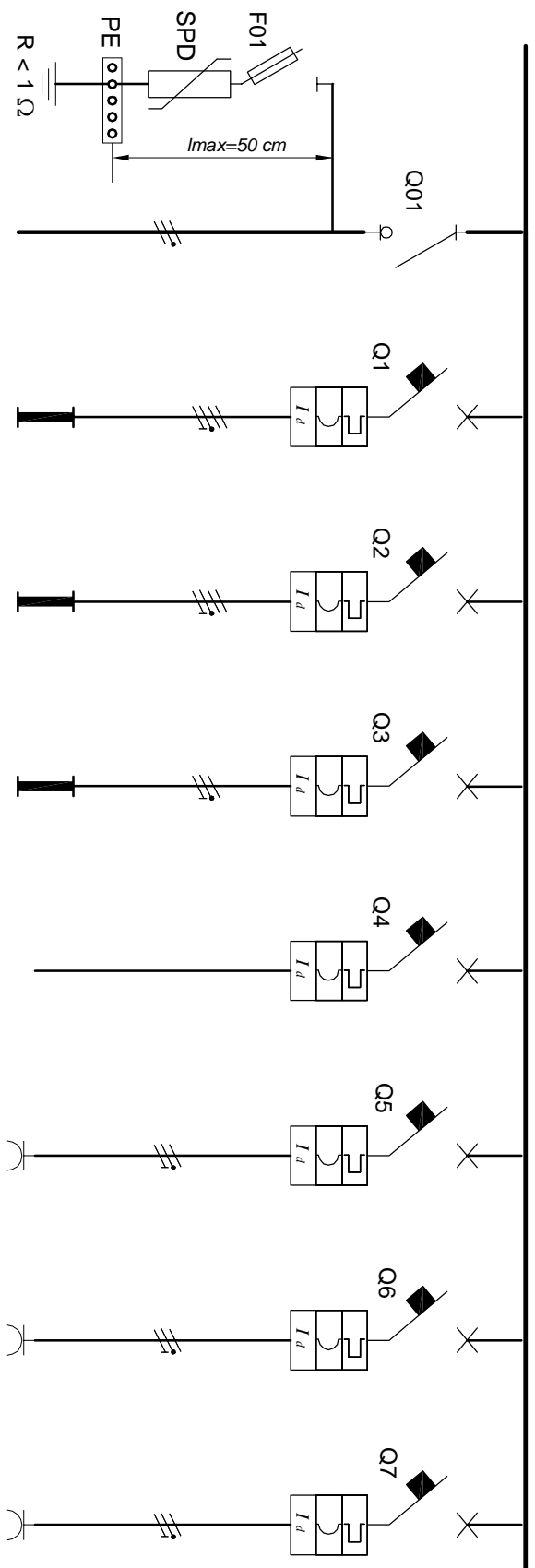


Echiparea completa a tabloului TS este specificata in norma locala NL4.



ACEASTA SCHEMA POATE FI COPIATA, UTILIZATA IN ALTE APLICATII SAU TIPARITA NUMAI CU ACORDUL SCRIS AL

FARA MIHAI P.F.A.

| Denumire | protectie supratensiuni | Intrare | iluminat coridor | iluminat | iluminat | rez. | circuit prize | circuit prize | prize la form. muzicala |
|----------------------|-------------------------|---------------------------|-------------------------------|-------------------------------|-------------------------------|---------------|----------------------------|----------------------------|----------------------------|
| Consumator | | | | | | | | | |
| Tip | | din TRGD-4 | AI4;13xAI5;3xLS3LS6 | 23xAI4;3xAI5 | 17xAI4;AI5 | | 4 LP | 4 LP | 4 LP |
| Nr. circuit / Faza | 02 / RST | 01 / RST | 1 / R | 2 / S | 3 / T | 4 / R | 5 / S | 6 / T | 7 / R |
| Putere totala [kW] | | PI=33.8; Ps=22 | 0,7 | 1,9 | 1,4 | 2 | 2 | 2 | 2 |
| Intreupator | | | | | | | | | |
| Tip | | manual in sarcina | magnetotermic | magnetotermic | magnetotermic | magnetotermic | magnetotermic | magnetotermic | magnetotermic |
| Poli | | 4P | 1P + N | 1P + N | 1P + N | 1P + N | 1P + N | 1P + N | 1P + N |
| In [A] | | 63 A | C 10 | C 16 | C 16 | C 16 | C 16 | C 16 | C 16 |
| Capacitate scc. [kA] | | 15 | 6 | 6 | 6 | 6 | 6 | 6 | 6 |
| Diferential | | | | | | | | | |
| In [A] | | | 30 mA; tip AC | 30 mA; tip AC | 30 mA; tip AC | 30 mA; tip AC | 30 mA; tip AC | 30 mA; tip AC | 30 mA; tip AC |
| Temporizare | | | 0s | 0s | 0s | 0s | 0s | 0s | 0s |
| Fuzibili | | | | | | | | | |
| Tip | | portfuzibili sectionabili | | | | | | | |
| Calibru [A] | | 3P+N; 50 A; GG 40 A | | | | | | | |
| Contactator | | | | | | | | | |
| Tip | | | | | | | | | |
| Pn [kW] In [A] | | | | | | | | | |
| Releu | | | | | | | | | |
| Tip | | SPD: 3P+N; tip II (C) | | | | | | | |
| Domeniu [A] | | limp=25kA | | | | | | | |
| Cablu | | | | | | | | | |
| Tip cablu | | FG7OR | FG7OR | FG7OR | FG7OR | FG7OR | FG7OR | FG7OR | FG7OR |
| Compus din | | 5x16 mm ² | 4x1.5 + 5x1.5 mm ² | 3x1.5 + 4x1.5 mm ² | 3x1.5 + 4x1.5 mm ² | - | 3x2.5 mm ² | 3x2.5 mm ² | 3x2.5 mm ² |
| Lungime [m] | | 10 | 40 + 30 | - | - | - | - | - | - |
| Tub tip / Ø [mm] | | PVC exec. grea / Ø50 | | | | | | | |
| Accesorii | | | | | | | | | |
| Tip | | ijheab metal | ijheab metal | ijheab metal | ijheab metal | ijheab metal | ijheab metal | ijheab metal | ijheab metal |
| Observatii | | | | | | | | | |
| | | | nu se monteaza acum | | | | nu se monteaza acum | nu se monteaza acum | nu se monteaza acum |

FARA MIHAI P.F.A.

F35 / 284 / 2015; CUI: 34152874
tel./fax: 0256-323.531; tel: 0722-646.157
e-mail: mihaitara@yahoo.com

Denumire:

CORPUL R. Modificare instalatii electrice si instalatii de securitate
Universitatea Politehnica Timisoara
Vol 1. INSTALATIILE ELECTRICE. TGD si spatii comune
Tablou TS. Schema monofilara

Proiectat:

ing. Mihai FARA
autorizate gr. III A; nr. 34201 / 2014
Desenat:
ing. Mihai FARA
autorizate gr. III A; nr. 34201 / 2014

Tanase

Tanase

DATA:

DATA: luna 2017

PAGINA:

PAGINA: 1
TOTAL PAGINI: 2

9.1/2017-12-E