

**Goal of the project:**

Through this paper the premises to advance a report to state institutions for including the TIA in the investment programme for the following timespan were created, which has already been materialized.

**Short description of the project:**

The project involved analysing and improving the development plan of the "Traian Vuia" Timișoara International Airport SA starting out from the new social, economic and political conditions existent in the year 2012.

**Project implemented by:**

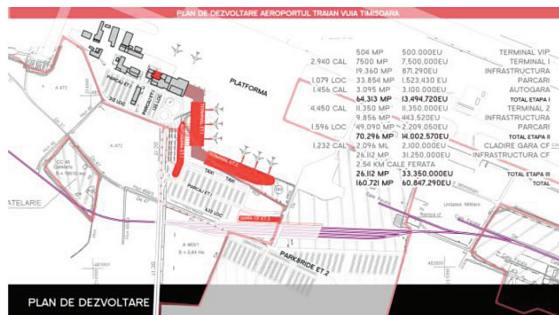
Prof. Eng. dr. ec. Mocan Marian – Project Manager and the team members who were: Conf. dr. Eng. Pugna Adrian, Conf. dr. arh. Radoslav Radu, Drd. Eng. Maistor Sorin.

**Implementation period:**

May 2012– September 2012

**Main activities:**

Current activity analysis, interviews with the main decision factors from within the TIA, analysis of the socioeconomic status in Romania and the European Union, elaborating scenarios and forecasted budgets, calculation of indicators.



**Results:** Traffic results and general financial results of the TIA are good so far, air-station

spaces for passengers (public areas and terminals), parking and cargo facilities tend to become insufficient from the point of view of the usable space that it offers for the fluent processing of passenger and luggage flows, Platforms for airship stationing are crowded and, consequently, the number of stationing positions tends to become insufficient for a safe and fluent handling of this activity, the runway needs modernising, A concrete integration of TIA activities with those of nearby logistics centres does not exist, an entry in TIA shareholdership of the County Councils from the West region for an easier access to funds is being proposed.

**Fields of interest:**

Economics, entrepreneurship, leadership, logistics

**Financed through/by:**

"Traian Vuia" Timișoara International Airoport

**Research team:**

Prof. Dr. Eng. Ec. Mocan Marian, Assoc. Prof. Dr. Eng. Pugna Adrian, Assoc. Prof. Dr. Arh. Radoslav Radu, Eng. Maistor Sorin PhD student, Dr. Eng. Bătea Alin, Ec. Duran Irina Daniela PhD student, Eng. Mircea Negrut PhD student, Student Danciu Mihai, Dr. mat. Pater Liliana

**Research centre:**

Research Centre for Engineering and Management.

**Aplicability and transferability of the results:**

The study can also be applied to other similar economical entities from Romania.

**Contact information:**

Email: [marian.mocan@mpt.upt.ro](mailto:marian.mocan@mpt.upt.ro)